

# unified planning work **program**

CORPUS CHRISTI URBAN TRANSPORTATION STUDY

## **fiscal year** 2010 - 2011

OCTOBER 1, 2010 - SEPTEMBER 30, 2011



APPROVED BY THE  
TRANSPORTATION POLICY COMMITTEE  
JULY 2, 2009

AMENDED BY THE  
TRANSPORTATION POLICY COMMITTEE  
JUNE 3, 2010

# UNIFIED PLANNING WORK PROGRAM

Corpus Christi Urban Transportation Study

## FISCAL YEAR 2010 - 2011

(October 1, 2009 - September 30, 2011)



Submitted by the

CORPUS CHRISTI METROPOLITAN PLANNING ORGANIZATION

Prepared in Cooperation with the  
Texas Department of Transportation and the U.S. Department of Transportation,  
Federal Highway Administration and Federal Transit Administration

**This report was funded in part through grant[s] from the Federal Highway Administration [and Federal Transit Administration], U.S. Department of Transportation. The views and opinions of the authors [or agency] expressed herein do not necessarily state or reflect those of the U. S. Department of Transportation.**

APPROVED BY THE TRANSPORTATION POLICY COMMITTEE: JULY 2, 2009  
AMENDED BY THE TRANSPORTATION POLICY COMMITTEE: JUNE 3, 2010

## TABLE OF CONTENTS

<b>I.</b>	<b>INTRODUCTION</b>	<b>1</b>
	A. Purpose	2
	B. Definition of Area	3
	C. Organization	3
	D. Private Sector Involvement	4
	E. Planning Issues and Emphasis	4
<b>II.</b>	<b>TASK 1.0 ADMINISTRATION AND MANAGEMENT ACTIVITIES</b>	<b>9</b>
	Subtask 1.1 - Study Coordination and Direction	11
	Subtask 1.2 - Unified Planning Work Program (UPWP)	12
	Subtask 1.3 - Monthly Billing and Financial Management	13
	Subtask 1.4 - Staff Training and Education	14
	Subtask 1.5 - Development and Planning Activities	15
	Subtask 1.6 - Website Management	16
	Subtask 1.7 - Public Outreach	17
	Subtask 1.8 - Title VI Civil Rights Evaluation	18
<b>III.</b>	<b>TASK 2.0 DATA DEVELOPMENT AND MAINTENANCE</b>	<b>19</b>
	Subtask 2.1 - MPO Geographic Information System (GIS) Database Enhancement	21
	Subtask 2.2 - MPO LAN / Hardware Management	22
	Subtask 2.3 - Demographic Database Update	23
<b>IV.</b>	<b>TASK 3.0 SHORT RANGE PLANNING</b>	<b>25</b>
	Subtask 3.1 - Transportation Improvement Program (TIP)	27
	Subtask 3.2 - Access Management Study	28
	Subtask 3.3 - Bicycle and Pedestrian Study	29
	Subtask 3.4 - Operational Safety and Security Study	30
	Subtask 3.5 - Transit Coordination Study	31
<b>V.</b>	<b>TASK 4.0 METROPOLITAN TRANSPORTATION PLAN</b>	<b>33</b>
	Subtask 4.1 - Travel Demand Model Analysis	35
	Subtask 4.2 - Corpus Christi Metropolitan Transportation Plan	36
	Subtask 4.3 - Air Quality Monitoring	37
	Subtask 4.4 - Texas Metropolitan Mobility Plan (TMMP)	38
<b>VI.</b>	<b>TASK 5.0 SPECIAL STUDIES</b>	<b>39</b>
	Subtask 5.1 - Congestion Management Process (CMP)	41
	Subtask 5.2 - Travel Time and Delay Study	42
	Subtask 5.3 - Financial Plans	43
	Subtask 5.4 - Rail Needs Study	44

**VII. BUDGET SUMMARY - TABLE 1**

45

**VIII. APPENDICES**

Appendix A - Committee Members

Corpus Christi Urban Transportation Study  
Transportation Policy Committee

Corpus Christi Urban Transportation Study  
Technical Advisory Committee

Appendix B - Metropolitan Area Boundary Map

Appendix C - Debarment Certification

Appendix D - Lobbying Certification

Appendix E - Certification of Compliance

Appendix F - MPO Self Certification

## I. INTRODUCTION

The 1962 Federal Aid Highway Act required states and local governments to conduct cooperative, comprehensive, and continuing (3C) transportation planning to continue receiving federal funds for highway and transit improvements. Subsequently in 1973, an amendment to this act further required the governor of each state, with local concurrence, to designate a Metropolitan Planning Organization (MPO) for every urbanized area to coordinate area wide transportation planning. In 1973, the Governor of the State of Texas, acting by, and through its State Department of Highways and Public Transportation designated the City of Corpus Christi through the Transportation Policy Board, to be the Metropolitan Planning Organization (MPO) for the Corpus Christi Urban Transportation Study Area. The MPO designation changed in June 2000. The Transportation Policy Committee is now the designated Metropolitan Planning Organization.

In 1991, the role of the MPO changed with the passage of the Intermodal Surface Transportation Efficiency Act of 1991 (ISTEA). ISTEA emphasized on the efficiency of the intermodal transportation system and the MPO focused on these aspects. The **Safe, Accountable, Flexible, Efficient Transportation Equity Act: A Legacy for Users (SAFETEA-LU)** was enacted August 10, 2005, as Public Law 109-59. SAFETEA-LU authorizes the Federal surface transportation programs for highways, highway safety, and transit for the 5-year period 2005-2009. Until a new surface transportation bill is introduced, we will continue to utilize SAFETEA-LU as guidance for our transportation programs.

Each year the Federal Highway Administration (FHWA) and the Federal Transit Administration (FTA) identifies planning factors for consideration regarding the metropolitan planning process. The Corpus Christi MPO addresses these factors in the MPOs Unified Planning Work Program (UPWP). In FY 2010 and 2011, the MPO will be focusing on the areas of supporting economic vitality, increasing the safety of the transportation system, increasing the ability of the transportation system to support homeland security and increasing the accessibility and mobility of people and freight. The Transportation System Management (TSM) strategies, access management policies, and transportation demand management strategies will be considered as a means by which to maintain an acceptable level of service on the transportation system. Intelligent Transportation System (ITS) improvements will also be considered as a means to improve the performance of the current system.

The MPO strives for cooperative planning efforts with the Regional Transportation Authority (RTA). The MPO funds and participates in various transit-related studies.

The MPO continues to follow a multimodal approach to transportation planning by adopting policies and objectives identified in studies completed as a part of previous Unified Planning Work Programs. These studies enhanced the MPO's capacity to improve safety, security, efficiency, as well as promote alternative transportation modes in the Corpus Christi Metropolitan Area.

- Bicycle and Pedestrian Plan
- Traffic Safety Study
- Access Management Study
- Freight and Hazardous Material Movement Study
- Regional Travel Speed Studies

The findings and recommendation from these studies are used in the Metropolitan Transportation Plan (MTP) policies and strategies to enhance the overall transportation system.

The MPO will continue to pursue an active public involvement campaign. The Metro-Mobility Talks, the newsletter of the MPO, will continue to be distributed to facilitate public involvement and improved coordination with the local media. The MPO website plays an important role in reaching out to the community for their involvement in the Transportation Planning Process. To inform and educate the community about the MPO and the planning process, regular articles are published in local business journals and newspapers. The MPO staff is in the process of developing performance measures for Title VI/Environmental Justice.

All MPO plans and programs comply with the public involvement provisions of Title VI which states: "No person in the United States shall, on grounds of race, color, or national origin, be excluded from participation in, be denied the benefits of, or be subjected to discrimination under any program or activity receiving federal financial assistance."

#### **A. PURPOSE:**

The Unified Planning Work Program (UPWP) describes transportation planning and related activities to be performed during the year by the MPO and partner entities. The document shows in sufficient detail "who will perform the work, the schedule for completing it, and the expected products."

The SAFETEA-LU lists eight factors that must be considered as part of the planning process:

1. Support the economic vitality of the metropolitan area, especially by enabling global competitiveness, productivity, and efficiency.
2. Increase the safety of the transportation system for motorized and non-motorized users.
3. Increase the ability of the transportation system to support homeland security and to safeguard the personal security of all motorized and non-motorized users.
4. Increase the accessibility and mobility of people and freight.
5. Protect and enhance the environment, promote energy conservation, and improve quality of life and promote consistency between transportation improvements and State and local planned growth and economic development patterns.
6. Enhance the integration and connectivity of the transportation system, across and between modes, for people and freight.
7. Promote efficient system management and operation.
8. Emphasize the preservation of the existing transportation system.

Each work element in the UPWP satisfies at least one element listed above.

Citizens' involvement is vital in the success of transportation planning. Public meetings are arranged in the areas with high concentration of low-income and elderly population and other minorities. Citizens are informed of MPO plans and activities through public notices, advertisements, and press releases. In addition, the MPO's web-site provides up to date information regarding MPO activities. The Metro-Mobility Talks, the MPO newsletter, is mailed to interested public and organizations. Citizens are also notified and encouraged to attend the monthly meetings of the Transportation Policy Committee (TPC) and the Technical Advisory Committee (TAC).

## **B. DEFINITION OF AREA:**

Based on the 2000 Census, the Census Bureau defined a new boundary for the Corpus Christi urbanized area which includes the cities of Corpus Christi, Portland, and Gregory. The region consists of 1,873 square miles with a population density of approximately 203.3 residents per square mile. The metropolitan planning area further extends to include parts of the rural areas of Nueces and San Patricio Counties that are expected to become urbanized in the next twenty years. Appendix B shows the Map of the existing Metropolitan Planning Area.

## **C. ORGANIZATION:**

Nueces County is the fiscal agent for the Corpus Christi MPO. Since June 2000, the Corpus Christi MPO's TPC is the designated MPO. The Corpus Christi MPO has a two-committee organizational structure. The TPC provides policy guidelines and approves the work of the TAC which provides technical support and direction necessary in the transportation planning process. The MPO's Transportation Planning Director and staff provide assistance to both Committees.

The Transportation Policy Committee is comprised of seven voting members. They include the mayors of Corpus Christi and Portland; county judges of Nueces and San Patricio; Chairpersons of the Regional Transportation Authority and the Port of Corpus Christi Authority; and the District Engineer of the Texas Department of Transportation. The 2000 Urbanized Area Boundary designation added the City of Gregory in the Metropolitan Area Boundary. Gregory is represented by the San Patricio County Judge and the County Commissioner at the TPC and TAC meetings, respectively.

The responsibilities of the MPO TPC described in the Metropolitan Transportation Planning Contract (MTPC) are as follows:

1. Ensure that requirements of 23 USC Sections 134 and 135 and 49 USC, Chapter 53 are carried out.
2. Use funds provided in accordance with Article 2, Section 1 of MTPC to develop and maintain a comprehensive regional transportation planning program in conformity with requirements of 23 USC Section 134(f) and 49 USC Section 5303.
3. Develop and adopt a Metropolitan Transportation Plan for the metropolitan planning area that will complement the Statewide Transportation Plan required by state and federal laws, a Transportation Improvement Program and Unified Planning Work Program and such other planning documents and reports that may be required by state and federal laws and regulations.

4. The MPO Policy Committee shall have sole responsibility to hire, supervise, evaluate and terminate the Transportation Planning Director.
5. The MPO Policy Committee shall provide planning policy direction to the Transportation Planning Director.

The TAC includes seven voting members appointed by the TPC for their technical expertise in transportation planning. Appendix A shows the list of our current TPC and TAC members. The TAC is responsible for the following as drafted in the Bylaws and Operation Procedures of the Corpus Christi MPO:

1. Assist the Transportation Policy with technical tasks associated with developing the Unified Planning Work program (UPWP) and recommend its adoption by the TPC.
2. Review transportation related studies within the Corpus Christi Metropolitan Planning Area and make recommendations to the TPC and other agencies.
3. Provide technical support in the preparation of the Metropolitan Transportation Plan (MTP) and recommend its adoption by the TPC.
4. Review the Transportation Improvement Program (TIP) and other high priority projects. Recommend its adoption by the TPC.
5. Advise the TPC on technical matters and, if specifically authorized by the TPC, on the policy matters with accompanying recommendations and supporting rationale.

#### **D. PRIVATE SECTOR INVOLVEMENT:**

The MPO plans to perform all UPWP subtasks utilizing MPO staff and some assistance from partner entities. However, depending on local resources, and federal funding availability – yet to be determined by the new anticipated transportation bill, the MPO may hire professional services to perform the needed studies identified as unfunded. The MPO also seeks input into the planning process by meeting with the Corpus Christi Chamber of Commerce Infrastructure Committee and the City of Corpus Christi's Planning Commission, Transportation Advisory Committee, the newly reorganized Bicycle and Pedestrian Subcommittee, Transportation Coordination Network of the Coastal Bend, and the Committee for Persons with Disabilities.

#### **E. PLANNING ISSUES AND EMPHASIS:**

##### Urban Growth:

The economic character of the community and region continue to have the existing infrastructure developed and revitalized. The Port of Corpus Christi Authority's plans for the La Quinta Trade Gateway project which will accommodate a modern, multi-modal facility providing seamless transfer of cargo, trailers, and containers between highway, rail, ferry, coastal and deep sea conveyances continues to progress forward. Area Economic Development Corporation partners have worked to secure an operational establishment for China's largest manufacturer of steel pipe – to be located just outside of Gregory, Texas. Zachary American Infrastructure is in the process of negotiating a public-private partnership with local

governmental entities to develop and build Highway 77 up to Interstate standards. As part of the funding available through the American Recovery and Reinvestment Act of 2009, the completion of the Joe Fulton International Trade Corridor – connecting Interstate Highway 37 and the Port of Corpus Christi is being realized.

The City of Corpus Christi's land use plan shows ongoing growth in the Southside. Land use changes along South Padre Island Drive (SPID) are challenging to the transportation network. With SPID as the only major highway corridor connecting the mainland to the island, it is operating at a lower level of service causing traffic congestion and delays. The arterial system adjacent to SPID has been identified as congested requiring traffic studies to determine if access management improvements can provide relief.

The cities of Portland, Gregory, Ingleside and Robstown are neighboring communities for the Corpus Christi area. The Corpus Christi Naval Air Station and the Corpus Christi Army Depot are the largest employers in the area. Many people commute from neighboring communities to Corpus Christi. Tourist attractions which bring many tourists to this area for short durations include: the USS Lexington Museum, the Texas State Aquarium, Padre Island National Seashore, Whataburger Field – Home of the Corpus Christi Hooks Double-A Baseball, Port Aransas Beaches, and the Botanical Gardens and Nature Center. The cumulative effect of these activities is an additional demand on housing and commerce that in turn generate more travel trips.

#### Hurricane Evacuation:

Hurricane preparation and evacuation routes are an essential planning element in our coastal community. Evacuation of the mainland away from the coast has resulted in added capacity to IH-37 - marked with the appropriate signs and lane markings for hurricane evacuation from Corpus Christi to east of San Antonio. The safe and efficient movement of residents and tourist out of harm's way is critical to public well being.

The JFK Causeway, the only permanent road link between the mainland and Padre Island, Mustang Island, and Port Aransas, has undergone enhancements that include elevated with improved travel lanes to promote safety and connectivity between the islands and mainland.

For the future, the Southside Mobility Corridor Study is a critical element in the long-range development plan. This project promises to alleviate existing elevation limitations evident on the only bridge from the island to the mainland. The Corridor will enhance safety issues by providing island residents with an alternative evacuation route from the island to the mainland – especially during hurricane evacuation.

#### Air Quality:

Corpus Christi remains in attainment of the new, more stringent ozone standard set forth by the US Environmental Protection Agency in 2008. Corpus Christi's continued attainment under these stricter standards is due to actual emissions reductions realized from local air quality work by a number of agencies including the MPO. We have worked as the Air Quality Committee under the leadership of the Pollution Prevention Partnership of Texas A&M University – Corpus Christi. The air quality activities and programs funded by the legislature included identifying and implementing voluntary emission reduction measures by business and industry, local government, and the public in close collaboration with Texas A&M University in both Corpus Christi and Kingsville.

### "Interstate 69" Corridor

TxDOT is working with the consultants on the design and environmental impact analysis associated with the corridor development. The MPO has also participated in discussion with the US-77 Coalition, the SR 44 Coalition and the I-69 Segment 4 & 5 Advisory Committees on improvements to these major corridors and the impact on the MPO area. This project will connect port and industrial areas in Mexico to northern states and Canada, while enhancing trade and commerce for our metropolitan area and the Port.

### Port of Corpus Christi Authority

As one of the largest economic engines for this area, the port has been very proactive by expanding and diversifying its cargo base. The area, known as a major producer of petroleum based products, chemicals, cotton, and grain, is well supported by the port. Expansion efforts include the Port being designated a Strategic Port by the Department of Defense and the extensive movement of military vehicles and cargo associated with the conflict in the Middle East.

The MPO will participate in study projects that will enable the Port to accommodate larger cargo and cruise ships in the inner harbor and to develop new opportunities for increased industrial and commercial growth. The Port, in an effort to enhance their global competitiveness, is developing a facility for international container ship trade on the northern shore of Corpus Christi Bay (the La Quinta Container Facility Project). The need for intermodal connectivity has been factored into the development of the MTP. The Port, becoming a wind energy cargo center in America, is importing and distributing more wind turbine engines and wind blades than most Gulf Coast ports combined.

The IH-37 / Joe Fulton International Trade Corridor direct connector project was a direct response to community safety concerns of freight traffic conflicting with residential traffic generated by a nearby school. This project provides new and improved linkage to the Port of Corpus Christi from Interstate 37 and U.S. Highway 181.

### Transit Service

The 2006 development of the Regional Public Transportation Coordination Plan which provides improved transit service coordination is currently being updated. The coordination effort has provided the area with access to federal funding through Job Access and Reverse Commute (JARC) and New Freedoms for projects in our region. Coordination entails collaboration of transit service providers and health and human services in the 12-county Coastal Bend region to identify gaps and overlaps in service, improve efficiency, and short and long term goals and objectives for improved access to jobs. Additional funding will permit continuation of the planning process.

### Intelligent Transportation System (ITS)

A regional ITS architecture and deployment plan was developed for the Corpus Christi Region. The stakeholders, including the Texas Department of Transportation (TxDOT), FHWA, Cities and Counties in the Coastal Bend Region and the RTA, reviewed and inventoried the existing infrastructure to identify future ITS needs and opportunities. The ITS Regional Architecture

Memorandum of Agreement (MOA) was reviewed by the MPO and TxDOT District staff in 2008 to determine if additional interagency discussion was needed. Several ITS related projects include:

1. A link from TxDOT's SH 286 fiber network to the City of Corpus Christi – Emergency Operations Center at Port Avenue and Leopard Street.
2. Coordination of city 911 Center with TxDOT message signs for posting of information that may impact the flow of traffic entering or exiting the freeway system.
3. Explore a feed to San Antonio's traffic center to monitor and activate message signs in an emergency.
4. Explore the feasibility of a wind monitoring system on high bridges to warn high profile vehicles.
5. Explore the feasibility of locations for additional permanent counters.
6. Explore "traffic queue warnings" for freeway exits with frequent queues impacting freeway traffic.

#### MTP – Planning Process Project

Discussions with TxDOT staff have resulted in an agreement to review the total MTP planning process in Corpus Christi over a five-year period from start to the final deliverable of the 2010 – 2035 MTP. With the assistance of the Texas Transportation Institute (TTI), the Corpus Christi MPO will be used as a case study. The TPC adopted a resolution November 2004 in support of a long-term commitment of staff time and resources with the objective being to evolve a model MTP process. The TPC acted January 2005 to amend the 2005 UPWP to allocate the necessary resources. The planning process study was completed and is hosted on the TTI web page.

#### SAFETEA-LU Compliance

The MPO incorporated and revised the 2010-2035 MTP to be fully compliant with the SAFETEA-LU planning regulations as well as submitting a SAFETEA-LU compliant 2011-2014 TIP. The MPO has conducted a "review and reappraisal" or SAFETEA-LU "gap analysis" of both the planning processes and the current MTP. Until a new transportation authorization bill is presented, the MPO will continue to take action to refine and enhance our planning process to remain compliant with SAFETEA-LU.

The 2010–2035 MTP was adopted in December of 2009 and the 2011-2014 TIP in June of 2010. It is recognized that subsequent amendments to the plans are anticipated. As needed the MOU or MOA documents will be developed as a single agreement by all stakeholders including MPO, State, and transit operators.

## ABBREVIATIONS

The following abbreviations denote agencies and programs:

### Local:

MPO	Corpus Christi Metropolitan Planning Organization
TMA	Corpus Christi Transportation Management Area
RTA	Corpus Christi Regional Transportation Authority
POCCA	Port of Corpus Christi Authority
LEPC	Local Emergency Planning Committee

### Regional:

CBCOG	Coastal Bend Council of Governments
-------	-------------------------------------

### State:

TxDOT	Texas Department of Transportation
TCEQ	Texas Commission on Environmental Quality

### Federal:

FHWA	Federal Highway Administration
FTA	Federal Transit Administration
CDBG	Community Development Block Grant
ISTEA	Intermodal Surface Transportation Efficiency Act of 1991
TMA	Transportation Management Area
TEA-21	Transportation Equity Act for the 21 <sup>st</sup> Century
SAFETEA-LU	Safe, Accountable, Flexible, Efficient, Transportation Equity Act: A Legacy for Users
EPA	Environmental Protection Agency
EJ	Environmental Justice

**II. TASK 1.0 ADMINISTRATION AND MANAGEMENT ACTIVITIES**

**A. OBJECTIVE:**

Coordinate the transportation planning activities of the MPO with the Texas Department of Transportation, the Federal Highway Administration, and interested public agencies in the metropolitan transportation planning process. Maintain records of all activities needed for the comprehensive, coordinated, and continuing (3C) transportation planning process. Take actions to enhance the technical capacity of the planning process and insure a proactive public involvement process that provides full public access to key decisions in developing both short and long range plans and programs.

**B. EXPECTED PRODUCTS:**

The MPO will perform administrative activities necessary to certify the transportation planning process and retain eligibility for federal and state funding for transportation planning and projects in the Corpus Christi Transportation Management Area (TMA).

**C. PREVIOUS WORK:**

The MPO will continue to act as liaison with agencies and individuals who are interested in transportation planning and improvement in the Corpus Christi Transportation Management Area. These activities include broad public and technical support and direct involvement to insure that planning actions are responsive to community values and needs.

**D. SUBTASKS:**

The following subtasks will be performed to achieve the objectives of this task. The objectives of each subtask are listed in detail within each subtask description on the following pages.

- Subtask 1.1 Study Coordination and Direction
- Subtask 1.2 Unified Planning Work Program
- Subtask 1.3 Monthly Billing and Financial Management
- Subtask 1.4 Staff Training and Education
- Subtask 1.5 Development and Planning Activities
- Subtask 1.6 Website Management
- Subtask 1.7 Public Outreach
- Subtask 1.8 Title VI Civil Rights Evaluation

Six full-time staff members with the assistance of outside contractors will perform administrative and technical activities to accomplish the tasks listed in the UPWP. The positions include: one Transportation Planning Director, one Transportation Development Specialist, one Information Resource Manager and Website Coordinator, one Transportation Planner I, one Executive Secretary, and one Senior Administrative Clerk. Time is allocated to each subtask based on the estimate of anticipated scope of each subtask.

**E. FUNDING SUMMARY:**

<b>Subtask</b>	<b>Responsible Agency</b>	<b>TPF*</b>	<b>FTA Sect. 5303</b>	<b>Local*</b>	<b>Total*</b>
Subtask 1.1	MPO	\$430,945	\$0	\$24,000	<b>\$454,945</b>
Subtask 1.2	MPO	\$ 15,515	\$0	\$0	<b>\$ 15,515</b>
Subtask 1.3	MPO	\$ 16,411	\$0	\$0	<b>\$ 16,411</b>
Subtask 1.4	MPO	\$ 67,486	\$0	\$0	<b>\$ 67,486</b>
Subtask 1.5	MPO	\$ 59,597	\$0	\$0	<b>\$ 59,597</b>
Subtask 1.6	MPO	\$ 35,204	\$0	\$0	<b>\$ 35,204</b>
Subtask 1.7	MPO	\$ 96,338	\$0	\$0	<b>\$ 96,338</b>
Subtask 1.8	MPO	\$ 26,660	\$0	\$0	<b>\$ 26,660</b>
<b>Total</b>		<b>\$748,156</b>	<b>\$0</b>	<b>\$24,000</b>	<b>\$772,156</b>

TxDOT Non-Federal Share Utilizing Development Credits	<b>\$80,000</b>
---	-----------------

\* TPF – This includes both FHWA PL-112 and FTA Section 5303 funds.

**SUBTASK 1.1 STUDY COORDINATION AND DIRECTION**

**OBJECTIVE:**

This subtask provides the ability to administer, coordinate, and monitor the associated transportation planning activities in the metropolitan area for compliance with federal and state requirements of SAFETEA-LU and the Metropolitan Transportation Planning Contract. Maintain close communication and coordination with the TxDOT District Office, the Regional Transportation Authority, Port of Corpus Christi Authority, and the representatives of the participating governments in implementing a coordinated, comprehensive, and continuing transportation planning process for the Corpus Christi Transportation Management Area. Involve the public at all levels of planning and decision-making. Participate in area wide activities by various public and private organizations to retain the attainment status for the Ambient Air Quality Standards. Monitor the activities, program and project development of regional organizations that would have an impact on the transportation network in the MPO area.

The material and equipment needed to perform this subtask over the two-year period includes: Office rent (\$56,000), the purchase of office furniture and equipment (\$19,000), office supplies including printing (\$32,500), computer repair (\$500) and hardware/software upgrades (\$12,600). Other resources needed to perform this subtask are telephone services (\$13,000), postage (\$2,400), mileage claims (\$24,000), and printing of notices and publications (\$10,000). The premiums for Workman’s Compensation (\$4,400), group insurances (\$68,000) and indirect cost to Nueces County (\$32,000) are also charged to this subtask. Local funds, of \$12,000 each year, will be used to pay membership to professional associations for the staff and other miscellaneous expenses that cannot be charged to federal funds.

**EXPECTED PRODUCTS:**

The MPO will facilitate the metropolitan transportation planning process for FY 2010-2011. The MPO will take actions necessary to comply with all federal and state regulations, requirements and certifications. The MPO will maintain verifiable administrative and financial records of metropolitan transportation planning activities. The MPO will take the actions necessary to assure proactive and continuous public involvement to assure that planning actions are responsive to community values and needs. The activities carried out in this subtask are a continuous process for the MPO.

**PREVIOUS WORK:**

The continued compliance with federal and state requirements to implement provisions of SAFETEA-LU to continue the transportation planning process for the Corpus Christi Transportation Management Area in FY 2010-2011.

**SUBTASK FUNDING SUMMARY:**

Subtask	Responsible Agency	TPF	FTA Sect. 5303	Local	Total
Subtask 1.1	MPO	\$430,945	\$0	\$24,000	\$454,945

**SUBTASK 1.2 UNIFIED PLANNING WORK PROGRAM (UPWP)**

**OBJECTIVE:**

This subtask provides for the cooperative development of a Unified Planning Work Program (UPWP) for FY 2010-2011 describing transportation planning activities scheduled to be carried out by the MPO staff, member agencies or consultants. The UPWP will show task objectives, a tangible product expected, previous work, and the cost and funding sources for these activities. The Texas Department of Transportation, public transit operators and the MPO committees will be involved in the development and approval of the draft and final document.

**EXPECTED PRODUCTS:**

The Unified Planning Work Program for FY 2010-2011 detailing the respective transportation planning tasks. The necessary amendments to reflect planning priorities based on the MPO area needs and the next transportation bill.

**PREVIOUS WORK:**

The FY 2009-2010 Unified Planning Work Program and FY 2008-2009 as amended.

**SUBTASK FUNDING SUMMARY:**

Subtask	Responsible Agency	TPF	FTA Sect. 5303	Local	Total
Subtask 1.2	MPO	\$15,515	\$0	\$0	\$15,515

**SUBTASK 1.3 MONTHLY BILLING AND FINANCIAL MANAGEMENT**

**OBJECTIVE:**

This subtask provides for the preparation of monthly billing reports on a timely basis. Submitting invoices to TxDOT for reimbursement of transportation planning funds. Preparation of the end of year (Annual Performance and Expenditure Report) report comparing actual achievements with the goals for the entire fiscal year.

**EXPECTED PRODUCTS:**

Monthly and Annual Performance and Expenditure Report(s) describing the achievements of each task and subtask in comparison to the goals set for the year. These reports will be submitted to TxDOT for reimbursement on a monthly basis. The final annual billing and a listing of completed Transportation Improvement Projects will be submitted to TxDOT by December 31, of each respective year.

**PREVIOUS WORK:**

Monthly expenditure reports and administration of the financial management tracking system.

**SUBTASK FUNDING SUMMARY:**

Subtask	Responsible Agency	TPF	FTA Sect. 5303	Local	Total
Subtask 1.3	MPO	\$16,411	\$0	\$0	\$16,411

**SUBTASK 1.4 STAFF TRAINING AND EDUCATION**

**OBJECTIVE:**

This subtask will keep the staff knowledgeable about the federal and state regulations, latest transportation planning technologies, and the best practices and activities of other MPO's. Staff capabilities will be enhanced by attending selected courses in local universities, colleges and seminars. With the passage of a new federal reauthorization it will be important that staff be informed and educated on new regulations and practices to develop and maintain a responsive transportation planning program.

**EXPECTED PRODUCTS:**

The MPO staff will participate in conferences, seminars, training workshops, workgroups and meetings to keep acquainted with the latest regulations and techniques in the transportation planning field or to develop general capabilities.

The training needs include attending workshops and conferences sponsored by TxDOT, FTA, FHWA, EPA, American Planning Association, Texas Transportation Institute, TEMPO and AMPO and educational institutions. Participation in TxDOT and TEMPO workgroups is anticipated with the new federal legislative reauthorization. Direct charges including registration fees, travel, lodging and related expenses to attend these courses are estimated at \$16,000 over the two-year period. The activities of this subtask are a continuous process to enhance technical and professional capacity.

**PREVIOUS WORK:**

The MPO staff attended selected conferences, training workshops, educational courses, and participated on several TxDOT workgroups throughout FY 2010-2011 for professional development purposes.

**SUBTASK FUNDING SUMMARY:**

Subtask	Responsible Agency	TPF	FTA Sect. 5303	Local	Total
Subtask 1.4	MPO	\$67,486	\$0	\$0	\$67,486

**SUBTASK 1.5 DEVELOPMENT AND PLANNING ACTIVITIES**

**OBJECTIVE:**

This subtask will provide for the MPO staff to attend planning and zoning commissions meetings, Transportation Advisory Committee and Bicycle Advisory Subcommittee meetings, stakeholders meetings and meetings of municipalities, providers of transportation, business associations, and other developers to keep informed about trends and activities in the region that will impact the transportation network. The MPO staff may also provide data and technical support as needed to organizations participating in the MPO transportation planning process to facilitate their making informed decisions about their development needs and the impact on the transportation network. The MPO will also consult “as appropriate” with “State and local agencies responsible for land use management, natural resources, environmental protection, conservation, and historic preservation” in developing long-range transportation plans.

**EXPECTED PRODUCTS:**

The information gathered from these meetings will be input for the metropolitan transportation planning process and help the MPO respond to emerging trends and patterns.

**PREVIOUS WORK:**

The MPO staff has attended the City of Corpus Christi Planning Commission, City Transportation Advisory Committee, Chamber of Commerce Infrastructure Committee, and I-69 Segment Committee meetings.

**SUBTASK FUNDING SUMMARY:**

Subtask	Responsible Agency	TPF	FTA Sect. 5303	Local	Total
Subtask 1.5	MPO	\$59,597	\$0	\$0	\$59,597

**SUBTASK 1.6 WEBSITE MANAGEMENT**

**OBJECTIVE:**

This subtask will continue the evolution of an effective and efficient electronic internet website that allows public access to MPO transportation planning information, MPO documents and reports, and provides a vehicle for obtaining public comment on the transportation planning process.

**EXPECTED PRODUCTS:**

The MPO will post all documents and reports on the MPO website in a timely manner. The MPO will expand the site use as a mechanism for public input through on-line interactive surveys and opinion polls. The MPO has enhanced the ability of the site to display data and maps for use by the public or other agencies in their planning efforts. The MPO redesigned the web-site in FY 2005 and will continue to re-evaluate the format to conform to Section 508 of the Americans with Disabilities Act.

**PREVIOUS WORK:**

Meeting notices and agenda are available on the website. Interactive questionnaires were developed and placed on-line to obtain public input for planning purposes. In addition, UPWP, TIP, Public Involvement Policy, Bylaws, Memorandum of Understanding and various other documents are available for the public review and comments. The website format has been updated recently to improve easy accessibility for MPO documents as part of our public outreach efforts.

**SUBTASK FUNDING SUMMARY:**

Subtask	Responsible Agency	TPF	FTA Sect. 5303	Local	Total
Subtask 1.6	MPO	\$35,204	\$0	\$0	\$35,204

**SUBTASK 1.7 PUBLIC OUTREACH**

**OBJECTIVE:**

This subtask will provide the ability to incorporate public outreach tools and techniques that will enhance the public involvement in making informed transportation decision by the technical and policy committees. To develop opportunities to more efficiently secure public input for the metropolitan transportation planning process with particular focus to involve the Title VI target population.

The MPO consults, as appropriate, with State and local agencies responsible for land use management, natural resources, environmental protection, conservation and historic preservation concerning the development of a long-range transportation plan and TIP. The consultation involves as appropriate- (i) comparison of the long-range transportation plans with State conservation plans or maps, if available; or (ii) comparison of long-range transportation plans to inventories of natural or historic resources, if available.

The MPO provides citizens, affected public agencies, representatives of public transportation employees, freight shippers, providers of freight transportation services, private providers of transportation, representatives of users of public transportation, representatives of users of pedestrian walkways and bicycle transportation facilities, representatives of the disabled, and other interested parties with a reasonable opportunity to comment on the long-range transportation plan and TIP and major revisions. The MPO actively seeks out input from community based transportation advocacy efforts such as the US 77 Coalition, I-69 Alliance, Economic Development Agencies, Nueces and San Patricio Rural Rail Districts and others to keep current on community needs, plans and priorities.

**EXPECTED PRODUCTS:**

Increased public input as measured by responses to questionnaires, e-mails, and written or verbal comments. Improved visualization and/or communication techniques through the services provided by the BoldFuture process at a cost of \$4,000. The MPO’s planning and programming products that are responsive to the needs of the area.

**PREVIOUS WORK:**

The MPO’s Transportation Policy Committee reaffirmed the current Participation Plan adopted in April 2006 as a minimum outreach effort. The MPO staff has updated the MPO website which serves as a community resource for MPO and other transportation agency projects. The MPO staff maintains a file of agendas and notices of public outreach activities in the MPO has participated.

**SUBTASK FUNDING SUMMARY:**

Subtask	Responsible Agency	TPF	FTA Sect. 5303	Local	Total
Subtask 1.7	MPO	\$96,338	\$0	\$0	\$96,338

**SUBTASK 1.8 TITLE VI CIVIL RIGHTS EVALUATION**

**OBJECTIVE:**

This subtask will provide for staff to evaluate the Title VI compliance performance measures. The MPO staff will prepare data and present it to Technical and Policy Committees to make decisions in compliance to Title VI Civil Rights and Evaluation guidelines.

The MPO serves as the primary forum where TxDOT, the RTA, local agencies, and the public develop local transportation plans and programs that address the metropolitan area's needs. The MPO helps local public officials understand how Title VI and environmental justice requirements improve planning and decision making.

The Title VI performance measures evaluation is a continuous process requiring project by project data analysis.

**EXPECTED PRODUCTS:**

The MPO will:

- Enhance our analytical capability to ensure that the long-range transportation plan and the transportation improvement program (TIP) comply with Title VI.
- Identify residential, employment, and transportation patterns of low-income and minority populations so that their needs can be identified and addressed, and that the benefits and burdens of transportation investments are fairly distributed.
- Evaluate and improve the public participation process to eliminate participation barriers and engage minority and low-income populations in transportation decision making.
- Re-evaluate the Title VI Civil Rights performance measures to assure compliance with SAFETEA-LU and the subsequent reauthorization.
- Evaluate (through the use of professional services in Subtask 4.2) the potential impact of toll projects on Title VI and environmental justice requirements.

**PREVIOUS WORK:**

The MPO staff prepared Geographic Information Data for Title VI Civil Rights evaluation and analyzed the adopted performance measures in a GIS environment.

**SUBTASK FUNDING SUMMARY:**

Subtask	Responsible Agency	TPF	FTA Sect. 5303	Local	Total
Subtask 1.8	MPO	\$26,660	\$0	\$0	\$26,660

**III. TASK 2.0 DATA DEVELOPMENT AND MAINTENANCE**

**A. OBJECTIVE:**

The Metropolitan Planning Process involves extensive use of various forms of data. This data includes population, income, household size, employment, car ownership, street configuration, street capacity, land use types and many more variables. The purpose of this task is to coordinate the local, state, and regional efforts in developing and updating the data needed for transportation planning and development and establish a data bank in the MPO for this data. The MPO is gradually transferring the paper data into a GIS database for use in the development of the MTP, Texas Metropolitan Mobility Plan (TMMP), Title VI Civil Rights Evaluation and other reports and studies that are produced by the MPO.

**B. EXPECTED PRODUCTS:**

The MPO has created a GIS database for data that the MPO maintains for its transportation planning needs. This is a continuous process which is required to provide current and accurate Data sets. The MPO continues to explore content opportunities and sources of information to establish the MPO as the communities' transportation information resource.

**C. PREVIOUS WORK:**

The MPO has developed the GIS data sets based on Census 2000 and reviewed population, household, income, and employment data.

**D. SUBTASKS:**

The following subtasks will be performed to achieve the objectives of this task. The objectives of the subtasks are listed in detail in the subtasks description on the following pages.

- Subtask 2.1 MPO geographic Information System (GIS) Database Development
- Subtask 2.2 MPO LAN / Hardware Management
- Subtask 2.3 Demographic Database Update

**E. FUNDING SUMMARY:**

Subtask	Responsible Agency	TPF*	FTA Sect. 5303	Local*	Total*
Subtask 2.1	MPO	\$ 43,693	\$0	\$0	<b>\$ 43,693</b>
Subtask 2.2	MPO	\$ 65,858	\$0	\$0	<b>\$ 65,858</b>
Subtask 2.3	MPO	\$ 20,499	\$0	\$0	<b>\$ 20,499</b>
<b>Total</b>		<b>\$130,050</b>	<b>\$0</b>	<b>\$0</b>	<b>\$130,050</b>

TxDOT Non-Federal Share Utilizing Development Credits	<b>\$22,000</b>
---	-----------------

\* TPF – This includes both FHWA PL-112 and FTA Section 5303 funds.

[ page intentionally left blank ]

**SUBTASK 2.1 MPO GEOGRAPHIC INFORMATION SYSTEM (GIS) DATABASE ENHANCEMENT**

**OBJECTIVE:**

This subtask provide for the staff to manage and update the Geographic Information System (GIS) database which will help in the MPO's and continuous planning process. Planning and programming of the MPO projects require visual data showing the geography of the area which enhances the technical capacity as well as policy decisions. An ongoing GIS tools and database update will improve the MPO planning process. The MPO is working to establish itself as the communities' transportation information resource. This requires accessing and formatting relevant data needed for the transportation and the comprehensive planning process.

**EXPECTED PRODUCTS:**

The GIS system will provide data layers for Title VI, Congestion Management Process (CMP), and the MTP planning process. The GIS based work also incorporates CTPP 2000 data, develops data by Traffic Analysis Zone (TAZ), and accesses data from the Travel Demand Model database. The GIS system will also provide a review of projects in the MTP and TIP utilizing GISST and NEPAassist to identify potential environmental issues.

**PREVIOUS WORK:**

The MPO staff prepared GIS map products for analyzing the TAZ's as a part of MTP Travel Demand Model update. Other work performed under this subtask is the review and transfer of CTPP 2000 data into the standard ESRI format and Transportation Improvement Program data transfer into the GIS format.

**SUBTASK FUNDING SUMMARY:**

Subtask	Responsible Agency	TPF	FTA Sect. 5303	Local	Total
Subtask 2.1	MPO	\$43,693	\$0	\$0	\$43,693

**SUBTASK 2.2 MPO LAN / HARDWAREMANAGEMENT**

**OBJECTIVE:**

This subtask will provide for staff to maintain optimum efficiency of the MPO network office systems in the multitasking work environment, exchange of GIS data with other MPO's and regional agencies.

The Network Administrator assures the efficient working of all the computers and peripherals. The MPO and member agencies jointly develop land use, demographic, employment, and other datasets. This data is exchanged with TxDOT and other regional agencies through network servers and internet connections. The Network Administrator maintains the Local and Regional Network Server Systems and internet connections at its optimal efficiency for the access and exchange of GIS and various data.

To maintain the LAN Network System over the two-year period the MPO has allocated \$30,000 in this subtask for the necessary annual ESRI and TransCAD license agreements for proprietary software, GIS server support and web hosting related expenses. Subtask 1.1 provides an additional \$12,600 for upgrading hardware and general office software as required and \$500 for computer repairs as needed and replacement of the City of Corpus Christi fiber optics system router in the MPO offices which provides our access to their GIS database.

**EXPECTED PRODUCTS:**

Maintaining the office network provides technologically productive and more efficient MPO office environment. The development and maintenance of MPO data processing capabilities are an essential part of the planning process.

**PREVIOUS WORK:**

The framework for the shared system was purchased in FY 2006-2007 and the system development will be completed in this subtask activity.

**SUBTASK FUNDING SUMMARY:**

Subtask	Responsible Agency	TPF	FTA Sect. 5303	Local	Total
Subtask 2.2	MPO	\$65,858	\$0	\$0	\$65,858

**SUBTASK 2.3 DEMOGRAPHIC DATABASE UPDATE**

**OBJECTIVE:**

This subtask will provide for staff to develop population, income, household, and employment data to be used in the 2035 forecast year travel model. The MPO staff will produce demographic data sets in five year increments starting from the base year 2006 up to 2035 forecast year at a traffic analysis zone (TAZ) level. To achieve this subtask, an analysis of the 2010 census demographic and land use data will be performed for the geographic distribution and aggregation. The MPO staff will be coordinating its efforts with the local and state agencies to develop trend data on changes in land use through the analysis and review of existing demographic data.

**EXPECTED PRODUCTS:**

The base year 2006 up to 2040 forecast year population, income, household, and employment data in five year increments.

**PREVIOUS WORK:**

The population, income, household, and employment data sets developed for the base year 1996 and the forecast year 2025, Census 2000 data and the preliminary results from the 2010 Census.

**SUBTASK FUNDING SUMMARY:**

Subtask	Responsible Agency	TPF	FTA Sect. 5303	Local	Total
Subtask 2.3	MPO	\$20,499	\$0	\$0	\$20,499



**IV. TASK 3.0 SHORT RANGE PLANNING**

**A. OBJECTIVE:**

The MPO is required to develop a SAFETEA-LU compliant Transportation Improvement Program (TIP) to outline a four-year schedule of transportation improvements for the study area. In addition, the MPO carries out various planning studies to explore the need for other projects that have not been identified in the Metropolitan Transportation Plan (MTP) or TIP.

**B. EXPECTED PRODUCTS:**

- Transportation Improvement Program
- Access Management Study
- MTP - Planning Process Project
- Transit Coordination Study

**C. PREVIOUS WORK:**

- Transportation Improvement Program
- Access Management Study – Everhart Rd.
- Bicycle and Pedestrian Plan
- Traffic Safety Study

**D. SUBTASKS:**

The following subtasks will be performed to achieve the objectives of this task. The objectives of each subtask are listed in detail within each subtask description on the following pages.

- Subtask 3.1 Transportation Improvement Program.
- Subtask 3.2 Access Management Study
- Subtask 3.3 Bicycle and Pedestrian Study
- Subtask 3.4 Operational Safety and Security Study
- Subtask 3.5 Transit Coordination

**E. FUNDING SUMMARY:**

<b>Subtask</b>	<b>Responsible Agency</b>	<b>TPF*</b>	<b>FTA Sect. 5303</b>	<b>Local*</b>	<b>Total*</b>
Subtask 3.1	MPO	\$ 48,183	\$0	\$0	<b>\$ 48,183</b>
Subtask 3.2	MPO	\$ 12,455	\$0	\$0	<b>\$ 12,455</b>
Subtask 3.3	MPO	\$ 23,421	\$0	\$0	<b>\$ 23,421</b>
Subtask 3.4	MPO	\$ 10,512	\$0	\$0	<b>\$ 10,512</b>
Subtask 3.5	MPO	\$ 19,342	\$0	\$0	<b>\$ 19,342</b>
<b>Total</b>		<b>\$113,913</b>	<b>\$0</b>	<b>\$0</b>	<b>\$113,913</b>

TxDOT Non-Federal Share Utilizing Development Credits	<b>\$18,000</b>
---	-----------------

\* TPF – This includes both FHWA PL-112 and FTA Section 5303 funds.

**SUBTASK 3.1 TRANSPORTATION IMPROVEMENT PROGRAM (TIP)**

**OBJECTIVE:**

This subtask will provide for staff to monitor and amend as needed the FY 2008 - 2011 Transportation Improvement Program in cooperation with area entities and providers of transportation. Conduct and coordinate public meetings to provide the public opportunities to review and comment on Transportation Improvement projects. Keep the FY 2008 - 2011 Transportation Improvements Program current by doing necessary amendments reflecting scope or funding changes for streets and transit projects based on a cooperative interagency input process and extensive public participation.

Develop the new FY 2011 - 2014 Transportation Improvement Program as part of the planning process and solicit public input. Submit in a timely manner according to the anticipated timetable to be released early in FY 2010.

**EXPECTED PRODUCTS:**

FY 2008 – 2011 and FY 2011 – 2014 compliant Transportation Improvement Program and the amendments as required. This subtask is a continuous process for the MPO.

**PREVIOUS WORK:**

The Transportation Improvement Program for the FY 2008 - 2011 containing streets and transit projects improvements in those years.

**SUBTASK FUNDING SUMMARY:**

Subtask	Responsible Agency	TPF	FTA Sect. 5303	Local	Total
Subtask 3.1	MPO	\$48,183	\$0	\$0	\$48,183

**SUBTASK 3.2 ACCESS MANAGEMENT STUDY**

**OBJECTIVE:**

The MPO’s objective is to continuously look into access management as a tool to identify cost effective transportation improvements. Proper implementation of Access Management techniques should provide reduced congestion, reduced accident rates, conservation of energy, and reduced air pollution. The MPO has identified with the assistance of professional consulting services priority corridors and intersections that have demonstrated issues related to congestion and safety. The need to review and implement improvements with the respective sponsoring agency is currently underway.

**EXPECTED PRODUCTS:**

The evaluation of physical and operating improvements that will reduce congestion or improve safety. The identification of near-term priority projects in corridors and intersections that can be implemented from an access management perspective and identification of potential funding strategies. It is anticipated that the new developments such as the TPCO steel plant, La Quinta Container facility, Las Brisas Power Plant, the Outlet mall and the Robstown Intermodal Center may require site evaluation for traffic flow improvements by contracted services requiring \$20,000 over the two year period. Other major corridors and intersections will be identified through a public process and as part of the Congestion Management Process.

**PREVIOUS WORK:**

Consulting services developed short and long-range strategies for reducing congestion and improving safety on the Everhart, Airline, Rodd Field, Staples and Saratoga corridors. The recommendations prompted the Traffic Signal Coordination Study in 2009.

**SUBTASK FUNDING SUMMARY:**

Subtask	Responsible Agency	TPF	FTA Sect. 5303	Local	Total
Subtask 3.2	MPO	\$12,455	\$0	\$0	\$12,455

**SUBTASK 3.3 BICYCLE PEDESTRIAN STUDY**

**OBJECTIVE:**

The MPO recognizes that transportation planning includes addressing the access and mobility needs of bicyclists and pedestrians to travel to work and non-work destinations - including education centers, shopping, entertainment, and recreation - within and in close proximity to neighborhoods. The MPO member agencies have adopted the 2005 MPO Bicycle and Pedestrian Plan and have started implementing a number of MPO recommendations. The work in this subtask will assist in providing technical and community outreach support to facilitate the implementation process.

**EXPECTED PRODUCTS:**

Subsequent work with member agencies has resulted in a new perspective on supporting the needs of the bicycle and pedestrian community. Several of the recommendations in the Plan have been implemented; however, further actions that need to be expanded upon include:

- The identification of priority ADA projects, pedestrian access projects, sources of funding and agency sponsorship;
- The creation of a Bicycle and Pedestrian Subcommittee of the City of Corpus Christi Transportation Advisory Committee (which both will include MPO representation);
- The development of a policy by the City of Corpus Christi to stripe bike lanes on roadways that are resurfaced whenever practical;
- The identification of additional projects that may be eligible for Safe Routes to Schools grant funding;
- The development of a pedestrian / bikeway project plan along City of Corpus Christi drainage canals for future enhancement funding.

The MPO will provide technical assistance to develop the concept of utilizing area drainage canals as a network of hike and bike trails and other recommendations that were in the adopted plan.

**PREVIOUS WORK:**

The MPO, with the assistance of a consultant, prepared the Bicycle and Pedestrian Plan for Nueces and San Patricio counties. The study provided the region with a concept for creating an environment where people could choose to bicycle or walk to their destinations and provide recreational opportunities for walking and bicycling to encourage a healthy and active lifestyle.

**SUBTASK FUNDING SUMMARY:**

Subtask	Responsible Agency	TPF	FTA Sect. 5303	Local	Total
Subtask 3.3	MPO	\$23,421	\$0	\$0	\$23,421

**SUBTASK 3.4 OPERATIONAL SAFETY AND SECURITY STUDY**

**OBJECTIVE:**

The objective of introducing safety into the planning process is to reduce highway fatalities by making our roads safer through a systematic approach. The MPO planning process incorporates security into the planning process by considering the factors associated with our local emergency management program and their impact on the transportation network.

**EXPECTED PRODUCTS:**

The MPO will continue to improve community awareness of safety concerns and the impact of freight and cargo movement on the transportation network by continuing to host FHWA and CTE teleconference workshops related to freight issues, transportation technology, and safety for member agencies and interested public. Other outreach efforts will include working with groups such as the Local Emergency Preparedness Committee, Transportation Advisory Committee for the City of Corpus Christi, the local chapter of the Texas Motor Transportation Association, and the Texas A&M University–Corpus Christi sponsored Safe Communities Committee.

Strategic mobility and military readiness are relevant to local disaster situations however; the Port of Corpus Christi is one of two strategic military deployment ports in Texas and that consideration impacts our planning process. The ability to deploy equipment and personnel rapidly is a critical element in the military strategy. Issues such as port access, port security intermodal capacity and capabilities are issues related to military deployment. Securing our transportation assets that support our port is a critical planning element.

Transportation is a critical element in the security of all of our area particularly when there is an emergency response to a natural or manmade event no matter the size or the frequency of the event. The MPO is committed to planning a transportation network infrastructure that can serve the community well in times of an emergency. The MPO will provide preliminary planning in the development of strategic protocols associated with incidents such as hurricane evacuation, closing of the Harbor Bridge, closing of the Intracoastal Waterway Bridge and other manmade or natural disasters.

**PREVIOUS WORK:**

Through the Unified Planning Work Programs (UPWP) process, the MPO identified and completed several studies which will improve the safety and security of the transportation system in the MPO area. The completed studies include: Traffic Safety Study; Bicycle and Pedestrian Plan; Everhart Corridor Access Management Study; Access Management; Freight and Hazardous Materials Movement Study and the Traffic Signal Coordination Planning and Development Study.

**SUBTASK FUNDING SUMMARY:**

Subtask	Responsible Agency	TPF	FTA Sect. 5303	Local	Total
Subtask 3.4	MPO	\$10,512	\$0	\$0	\$10,512

**SUBTASK 3.5 TRANSIT COORDINATION STUDY**

**OBJECTIVE:**

The development of our local Regional Transit Coordination Study was a collaborative response to the State and federal requirements that all MPO’s participate in the development of a collaborative regional transit coordination plan. The initial plan provided an updated information base and provided a regional plan that is responsive to the needs of our area. The MPO provided the technical support for that process and assisted in creating a Regional Transit Coordinator position funded by grant funds from TxDOT and the FTA. This subtask will sustain that planning effort and assure that the plan and recommendations are consistent with current needs and resources.

**EXPECTED PRODUCTS:**

The responsibility and direction of the coordinator position has been assumed by the Transportation Coordinating Network however; the MPO will continue to participate in the collaboration effort to implement recommendations in the plan and to keep the planning process up to date. This effort will assure both TxDOT and FTA that the region has a current and comprehensive Regional Transportation Plan. The MPO will also participate in the update of the RTA Long-range Plan to assure coordination with the regional plan.

**PREVIOUS WORK:**

The collaboration effort created the Regional Transportation Coordination Study in December 2006 and the input and recommendations from that plan formed the foundation for the creation of the “Transportation Coordination Network”. This collaborative network of the MPO, Corpus Christi TxDOT District, Coastal Bend Council of Governments, the local Workforce Board, rural and urban public and private transit providers and social service agencies will keep the regional transit planning process ongoing.

**SUBTASK FUNDING SUMMARY:**

Subtask	Responsible Agency	TPF	FTA Sect. 5303	Local	Total
Subtask 3.5	MPO	\$19,342	\$0	\$0	\$19,342



## **V. TASK 4.0 METROPOLITAN TRANSPORTATION PLAN**

### **A. OBJECTIVE:**

The SAFETEA-LU requires the development of a transportation plan addressing a twenty-year planning horizon. The plan shall include both long-range and short-range strategies and actions that lead to the development of an integrated intermodal transportation system. The plan shall be reviewed and updated at least every five years in attainment areas. If the MPO becomes non attainment for air quality, then the plan will be revised every fourth year to comply with the State Implementation Plan (SIP). The MPO staff will participate in the area wide efforts to retain attainment status for the Ambient Air Quality. The staff will participate in the efforts of the Air Quality Committee and the Technical Work Group (TWG) on Mobile Source Emission.

The SAFETEA-LU lists eight factors that must be considered as part of the planning process:

1. Support the economic vitality of the metropolitan area, especially by enabling global competitiveness, productivity, and efficiency.
2. Increase the safety of the transportation system for motorized and non-motorized users.
3. Increase the ability of the transportation system to support homeland security and to safeguard the personal security of all motorized and non-motorized users.
4. Increase the accessibility and mobility of people and freight.
5. Protect and enhance the environment, promote energy conservation, and improve quality of life and promote consistency between transportation improvements and State and local planned growth and economic development patterns.
6. Enhance the integration and connectivity of the transportation system, across and between modes, for people and freight.
7. Promote efficient system management and operation.
8. Emphasize the preservation of the existing transportation system.

### **B. EXPECTED PRODUCTS:**

- Travel Demand Model Analysis
- The Corpus Christi Metropolitan Transportation Plan
- Air Quality Monitoring
- Texas Metropolitan Mobility Plan (TMMP)

### **C. PREVIOUS WORK:**

- Travel Demand Model Refinement
- The Corpus Christi Metropolitan Transportation Plan
- Air Quality Monitoring
- Texas Metropolitan Mobility Plan (TMMP)

**D. SUBTASKS:**

- Subtask 4.1 Travel Demand Model Analysis
- Subtask 4.2 Corpus Christi Metropolitan Transportation Plan
- Subtask 4.3 Air Quality Monitoring
- Subtask 4.4 Texas Metropolitan Mobility Plan (TMMP)

**E. FUNDING SUMMARY:**

<b>Subtask</b>	<b>Responsible Agency</b>	<b>TPF*</b>	<b>FTA Sect. 5303</b>	<b>Local*</b>	<b>Total*</b>
Subtask 4.1	MPO	\$ 62,936	\$0	\$0	<b>\$ 62,936</b>
Subtask 4.2	MPO	\$133,520	\$0	\$0	<b>\$133,520</b>
Subtask 4.3	MPO	\$ 18,586	\$0	\$0	<b>\$ 18,586</b>
Subtask 4.4	MPO	\$ 4,432	\$0	\$0	<b>\$ 4,432</b>
<b>Total</b>		<b>\$ 219,474</b>	<b>\$0</b>	<b>\$0</b>	<b>\$ 219,474</b>

TxDOT Non-Federal Share Utilizing Development Credits	<b>\$26,000</b>
---	-----------------

\* TPF – This includes both FHWA PL-112 and FTA Section 5303 funds.

**SUBTASK 4.1 TRAVEL DEMAND MODEL ANALYSIS**

**OBJECTIVE:**

This subtask will refine the use of the TxDOT travel demand model forecast anticipated in early FY 2010 for effective use in the planning process.

**EXPECTED PRODUCTS:**

The MPO would like to enhance the utilization of the travel demand model data in the planning process through the use of consulting services at an estimated cost of \$50,000 over the two-year period. The work would include assisting the staff in:

- Using the calibrated model from TxDOT Transportation Planning and Programming Division, to prepare transportation forecasts for specific corridor alternatives.
- Refining the travel demand model data for use in specific corridor scenarios.
- Assist the staff in working with member agencies to more effectively utilize the data provided by the model run.
- Enhance the ability of MPO staff to provide alternative and subarea traffic analysis results.

**PREVIOUS WORK:**

- 2030 Travel Demand Model.

**SUBTASK FUNDING SUMMARY:**

Subtask	Responsible Agency	TPF	FTA Sect. 5303	Local	Total
Subtask 4.1	MPO	\$62,936	\$0	\$0	\$62,936

**SUBTASK 4.2 CORPUS CHRISTI METROPOLITAN TRANSPORTATION PLAN**

**OBJECTIVE:**

This subtask will keep the current and the 2035 Metropolitan Transportation Plan current by making amendments as required, with the involvement of public officials and citizens, in compliance with the requirements of SAFETEA-LU and subsequent reauthorization. Also, staff will review and update the policies, goals and objectives of the different elements of the plan process based on the next transportation bill.

**EXPECTED PRODUCTS:**

Amendments to the Corpus Christi Metropolitan Transportation Plan 2007-2030 and development of the 2010-2035 plan.

The MPO would like to enhance the planning process through the use of consulting services at an estimated cost of \$70,000 over the two-year period by:

- Expanding upon the 2009 efforts to integrate NEPA into the planning process through the use of NEPAssist.
- Evaluating the total project cost estimates in the year of expenditure for the 2010 – 2035 MTP and review of the MPO inflation rate assumption.
- Evaluating the impact of possible tolled facilities on Title VI and Environmental Justice.
- Assisting staff in identifying the impact of new state or federal legislation or regulatory requirements and recommend corrective actions as may be required.
- Developing strategies for the MPO to be proactive in the mitigation of environmental impact on projects in our study area.
- Evaluating the impact of changing TxDOT and local priorities on the allocation of limited resources to operations and maintenance projects.
- Identifying opportunities to partner or leverage public resources into projects or products that have greater public benefit than individual agency efforts.

**PREVIOUS WORK:**

Actions to assure that the 2007-2030 Metropolitan Transportation Plan remained in compliance. Development of staff practices to begin the incorporation of NEPA into the planning process through the use of GISST.

**SUBTASK FUNDING SUMMARY:**

Subtask	Responsible Agency	TPF	FTA Sect. 5303	Local	Total
Subtask 4.2	MPO	\$133,520	\$0	\$0	\$133,520

**SUBTASK 4.3 AIR QUALITY MONITORING**

**OBJECTIVE:**

This subtask will provide for the participation in the City of Corpus Christi Air Quality Committee, a coalition of public and private entities that develop strategies to retain the attainment status for the Ambient Air Quality Standards. This committee participates in studies, public education, and mobile source data collection. The MPO will also participate in the activities of the Technical Working Group (TWG) on Mobile Source Emission. The TWG was established by the Texas Department of Transportation to educate and assist near non-attainment areas to avoid the non-attainment status. The MPO has set aside \$8,000 for research and the public outreach efforts of the Air Quality Committee directly beneficial to the MPO planning process. The MPO also works with the Pollution Prevention Partnership a community outreach program of Texas A&M University – Corpus Christi to make the public aware of regional air quality issues.

**EXPECTED PRODUCTS:**

The MPO staff will participate and coordinate with the Corpus Christi Air Quality Committee and Technical Working Group. The MPO will continue to coordinate with the Pollution Prevention Partnership (PPP) on industry and public outreach efforts.

**PREVIOUS WORK:**

The MPO staff attends the City of Corpus Christi Air Quality Committee, and the TWG meetings to keep abreast of the new regulations and changes in the local conditions. The MPO and the PPP have cooperatively developed public information efforts and initiated a city wide bike rack program.

**SUBTASK FUNDING SUMMARY:**

Subtask	Responsible Agency	TPF	FTA Sect. 5303	Local	Total
Subtask 4.3	MPO	\$18,586	\$0	\$0	\$18,586

**SUBTASK 4.4 TEXAS METROPOLITAN MOBILITY PLAN (TMMP)**

**OBJECTIVE:**

This subtask provides for updating of the Texas Metropolitan Mobility Plan data when requested by TxDOT. This provides TxDOT an insight into the mobility needs of the two county metropolitan regions. It also identifies projected funding gaps between anticipated funding and the needed transportation improvements.

**EXPECTED PRODUCTS:**

Revisions to the Corpus Christi Texas Metropolitan Mobility Plan data provided to TTI in 2009 for the 2030 Committee. It is not anticipated that a new report will be required and staff resources are provided for data updates only.

**PREVIOUS WORK:**

The last revision of the Texas Metropolitan Mobility Plan data was completed in 2009.

**SUBTASK FUNDING SUMMARY:**

Subtask	Responsible Agency	TPF	FTA Sect. 5303	Local	Total
Subtask 4.4	MPO	\$4,432	\$0	\$0	\$4,432

**VI. TASK 5.0 SPECIAL STUDIES**

**A. OBJECTIVE:**

Special studies needed to support the development and maintenance of the planning process. The MPO Congestion Management Process (CMP) working group utilizes updated travel time and delay data which is the special purpose studies in this task. The study is the periodic update of the CMP utilized traffic data collection activity. Two studies to integrate land use and transit choice into the planning process.

**B. EXPECTED PRODUCTS:**

The staff is continually updating traffic count data and will also respond to directives from the Transportation Policy Committee for any special studies related to continuation of the transportation planning process. The traffic count data will be collected at over 200 critical locations as a part of congestion management system plan. A special project to develop an enhanced visualization method to make traffic count data accessible to the public will require additional professional services. Two additional studies will provide 1) the information and process necessary to integrate land use into the planning process and 2) the development of a transit alternative into the travel demand modeling process.

**C. PREVIOUS WORK:**

- Traffic Congestion Management Study

**D. SUBTASKS:**

- Subtask 5.1 Congestion Management Process
- Subtask 5.2 Travel Time and Delay Study
- Subtask 5.3 Financial Plans
- Subtask 5.4 Rail Needs Study

**E. FUNDING SUMMARY:**

Subtask	Responsible Agency	TPF*	FTA Sect. 5303	Local*	Total*
Subtask 5.1	MPO	\$ 56,326	\$0	\$0	\$ 56,326
Subtask 5.2	MPO	\$130,256	\$0	\$0	\$ 130,256
Subtask 5.3	MPO	\$ 41,776	\$0	\$0	\$ 41,776
Subtask 5.4	MPO	\$ 53,649	\$0	\$0	\$ 53,649
<b>Total</b>		<b>\$282,007</b>	<b>\$0</b>	<b>\$0</b>	<b>\$ 282,007</b>

TxDOT Non-Federal Share Utilizing Development Credits	<b>\$14,000</b>
---	-----------------

\* TPF – This includes both FHWA PL-112 and FTA Section 5303 funds.

[ page intentionally left blank ]

**SUBTASK 5.1 CONGESTION MANAGEMENT PROCESS (CMP)**

**OBJECTIVE:**

This subtask provides for the use and development of the Congestion Management Process (CMP). The CMP establishes a systematic process that provides information on transportation system performance and alternative strategies to alleviate congestion and enhance the mobility of persons and goods in the Corpus Christi Metropolitan Area. As part of the process the MPO has used the travel time and delay studies and the traffic count data to gauge the degree of congestion on various segments of the streets within the urbanized area. The MPO receives traffic count data from the Cities of Corpus Christi and Portland and the Texas Department of Transportation as well as project specific counts from professional service providers. The MPO has budgeted \$45,000 for contracted traffic counts in the urbanized area and will contract for a new Regional Travel Speed and Delay Study as Subtask 5.2.

**EXPECTED PRODUCTS:**

The MPO collects traffic count data on 200 locations on a two-year cycle basis. The data is analyzed to produce maps showing the degree of congestion on various segments of streets. This data is used to select projects for MTP and TIP and to evaluate project performance. The MPO will also provide traffic count and analysis information for high impact projects that could have a significant impact on the network.

**PREVIOUS WORK:**

The GIS Maps showing the Mobility Ratios for the streets in the MPO area and an interactive map on the website showing recent traffic counts. Analysis of high impact projects on the transportation network.

**SUBTASK FUNDING SUMMARY:**

Subtask	Responsible Agency	TPF	FTA Sect. 5303	Local	Total
Subtask 5.1	MPO	\$56,326	\$0	\$0	\$56,326

**SUBTASK 5.2 TRAVEL TIME AND DELAY STUDY**

**OBJECTIVE:**

It is necessary for metropolitan planning organizations (MPO) to maintain an accurate, up to date regional transportation model in order to conform to State and Federal regulations for transportation projects. The MPO has updated and calibrated the model using current information on the roadway network, area development, and other relevant characteristics such as travel time and speed data.

The primary purpose of the 2010 Travel Speed Study will be to evaluate the transportation system and prepare a report as part of the Congestion Management Process in compliance with the current requirements. The secondary purpose of the study was to identify trends in congestion.

**EXPECTED PRODUCTS:**

An updated Travel Speed Study developed through professional services estimated at \$120,000 will provide roadways mapped to establish centerlines and record relevant roadway features. Features in the mapping process will include: speed limits, school zone limits, and intersection control information. The primary purpose of the 2009 Travel Speed Study will be to expand on the 2003 and 2006 effort to cover more of the network and to develop a trend for those segments previously included.

Travel speed data will be collected during the months school is in session on Tuesdays, Wednesdays, and Thursdays, during the morning and during the afternoon peak period. A special count and analysis to identify seasonal variations and impact of average daily vehicles is funded and will be conducted on PR 22 and SH361 and related network connections.

**PREVIOUS WORK:**

For the 2006 study, the MPO contracted to collect roadway characteristics and field-measured travel time and speed data for use in calibrating and validating the regional transportation model. The contractor expanded the scope of the study without increasing the cost to include a larger sample of roadways, a major GIS enhancement, digital video, percent stops at intersections, and congestion index (% of posted speed).

Through the methodology developed and the additional data assembled, the data collected in this study has a variety of additional uses. Because the information is all housed in the GIS system, queries can group data by area for use in individual planning processes. The database can be used for background information for signal timing projects, signing and pavement marking. This provided a new element in the planning process.

**SUBTASK FUNDING SUMMARY:**

Subtask	Responsible Agency	TPF	FTA Sect. 5303	Local	Total
Subtask 5.2	MPO	\$130,256	\$0	\$0	\$130,256

**SUBTASK 5.3 FINANCIAL PLAN**

**OBJECTIVE:**

The Corpus Christi MPO needs to develop a cost allocation plan as required under OMB A-87 as it relates to the indirect costs associated with the relationship with our fiscal agent. The financial plan will also provide for a 2011 annual review as required.

**EXPECTED PRODUCTS:**

The plan will review the Fiscal, Personnel and Property Management Agreement between Nueces County and the MPO. A cost allocation plan will be developed and a determination made of an equitable annual "Fee for Service". This annual Fee for Service will be evaluated in the following one-year period to determine if any adjustment should be made as provided for in the agreement. Professional services will be required in an amount not to exceed \$30,000.

**PREVIOUS WORK:**

The current Fiscal, Personnel and Property Management Agreement was executed in March of 2003 and adjusted a single time in July of 2007. This subtask will provide a current cost allocation plan to be approved by TxDOT and FHWA and provide for a subsequent annual review.

**SUBTASK FUNDING SUMMARY:**

Subtask	Responsible Agency	TPF	FTA Sect. 5303	Local	Total
Subtask 5.3	MPO	\$41,776	\$0	\$0	\$41,776

**SUBTASK 5.4 RAIL NEEDS STUDY**

**OBJECTIVE:**

This subtask would provide for an evaluation of latent rail demand and would consider a wide range of alternatives for adding capacity to the two-county rail network. Alternatives would be selected from those advocated by the Rural Rail Districts, interested businesses or local or State government such as: improved rail bed, switches, track storage areas for improved efficiencies in the movement of freight and cargo.

**EXPECTED PRODUCTS:**

The study utilizing professional services at an estimated cost of \$42,000 would provide a compilation of existing conditions, history of previous studies, documentation of existing business needs based on input from the individuals, business officials and public officials. The study would also document potential projects that would increase the volume and efficiency of freight and cargo movement.

The study may utilize travel forecasts, modal, management design and environmental considerations, and cost estimates of reasonably practical alternative improvements.

The study will also explore economic benefits of improvements, preliminary determination of economic justification and financial feasibility.

**PREVIOUS WORK:**

The MPO had a “Freight and Hazardous Materials Movement Study” done in 2004 that compiled data on freight and cargo movement with the MPO study area. The primary focus was on truck freight and cargo however, rail and water assets were considered. The MPO also conducted a “Corpus Christi Major Freight Facilities Impact Study”. This report described and evaluated the regions existing and planned assets and their impact on the road and rail infrastructure. The Rail Needs Study will build upon that work and responds to requests from the Rural Rail Districts for information and insight to assist them in their project prioritization process.

**SUBTASK FUNDING SUMMARY:**

Subtask	Responsible Agency	TPF	FTA Sect. 5303	Local	Total
Subtask 5.4	MPO	\$ 53,649	\$0	\$0	\$ 53,649

**BUDGET SUMMARY**

**TABLE 1 - CORPUS CHRISTI URBAN TRANSPORTATION STUDY**

UPWP Task	FTA Task	Description	TPF <sup>1</sup> Funds	FTA Sect. 5303	Local Funds	Total Funds
1.0	44.21.00	Administration - Management	\$748,156	\$0	\$24,000	\$ 772,156
2.0	44.22.00	Data Development and Maintenance	\$130,050	\$0	\$0	\$ 130,050
3.0	44.24.00	Short Range Planning	\$113,913	\$0	\$0	\$ 113,913
4.0	44.23.00	Metropolitan Transportation Plan	\$219,474	\$0	\$0	\$ 219,474
5.0	44.27.00	Special Studies	\$282,007	\$0	\$0	\$ 282,007
<b>Total</b>			<b>\$1,493,600</b>	<b>\$0</b>	<b>\$24,000</b>	<b>\$1,517,600</b>

<sup>1</sup> TRANSPORTATION PLANNING FUNDS AVAILABLE

FHWA (PL -112) <sup>2</sup>	\$	1,138,432	(\$569,216 FY '10 and \$569,216 FY'11)
FTA Section 5303 (Sect. 8)	\$	272,554*	(\$136,277 FY '10 and \$136,277 FY '11)
E(PL-112) 2009 Unexpended Carryover	\$	83,505	
<b>TOTAL TPF</b>	<b>\$</b>	<b>1,494,491</b>	

<sup>2</sup> Estimate based on prior years authorizations

**By minute order, the Texas Transportation Commission authorizes the use of transportation development credits as TxDOT's non-Federal share for FHWA (PL-112) and FTA 5303 funds. As the credits reflect neither cash nor man-hours, they are not reflected in the funding tables.**

## APPENDICES

**APPENDIX 'A'**

**TRANSPORTATION POLICY COMMITTEE MEMBERSHIP**

**TECHNICAL ADVISORY COMMITTEE MEMBERSHIP**

**CORPUS CHRISTI METROPOLITAN PLANNING ORGANIZATION  
TRANSPORTATION POLICY COMMITTEE**

<b>VOTING MEMBERS</b>		
<b>Terry A. Simpson</b> Chairperson	County Judge	San Patricio County
<b>Crystal Lyons</b> Vice-Chairperson	Chairman	Corpus Christi Regional Transportation Authority
<b>David Krebs</b>	Mayor	City of Portland
<b>Joe Adame</b>	Mayor	City of Corpus Christi
<b>Loyd Neal</b>	County Judge	Nueces County
<b>Mike Carrell</b>	Chairman	Port of Corpus Christi Authority
<b>Julie Brown, P.E.</b>	Interim District Engineer	Texas Department of Transportation Corpus Christi District

<b>EX-OFFICIO NON-VOTING MEMBERS</b>		
<b>Kirk Fauver</b>	Statewide Planning Engineer	Federal Highway Administration
<b>Tony Ogboli</b>	Community Planner	Federal Transit Administration
<b>Cary Karnstadt</b>	Transportation Planner	Transportation Planning & Programming, Texas Department of Transportation
<b>Betty Jean Longoria</b>	Representative	Coastal Bend Council of Governments
<b>State Legislators or Member of U.S. Congress</b>		Texas Legislators / United States Congress (District included in the MPO Study Area)

**CORPUS CHRISTI METROPOLITAN PLANNING ORGANIZATION**

**TECHNICAL ADVISORY COMMITTEE**

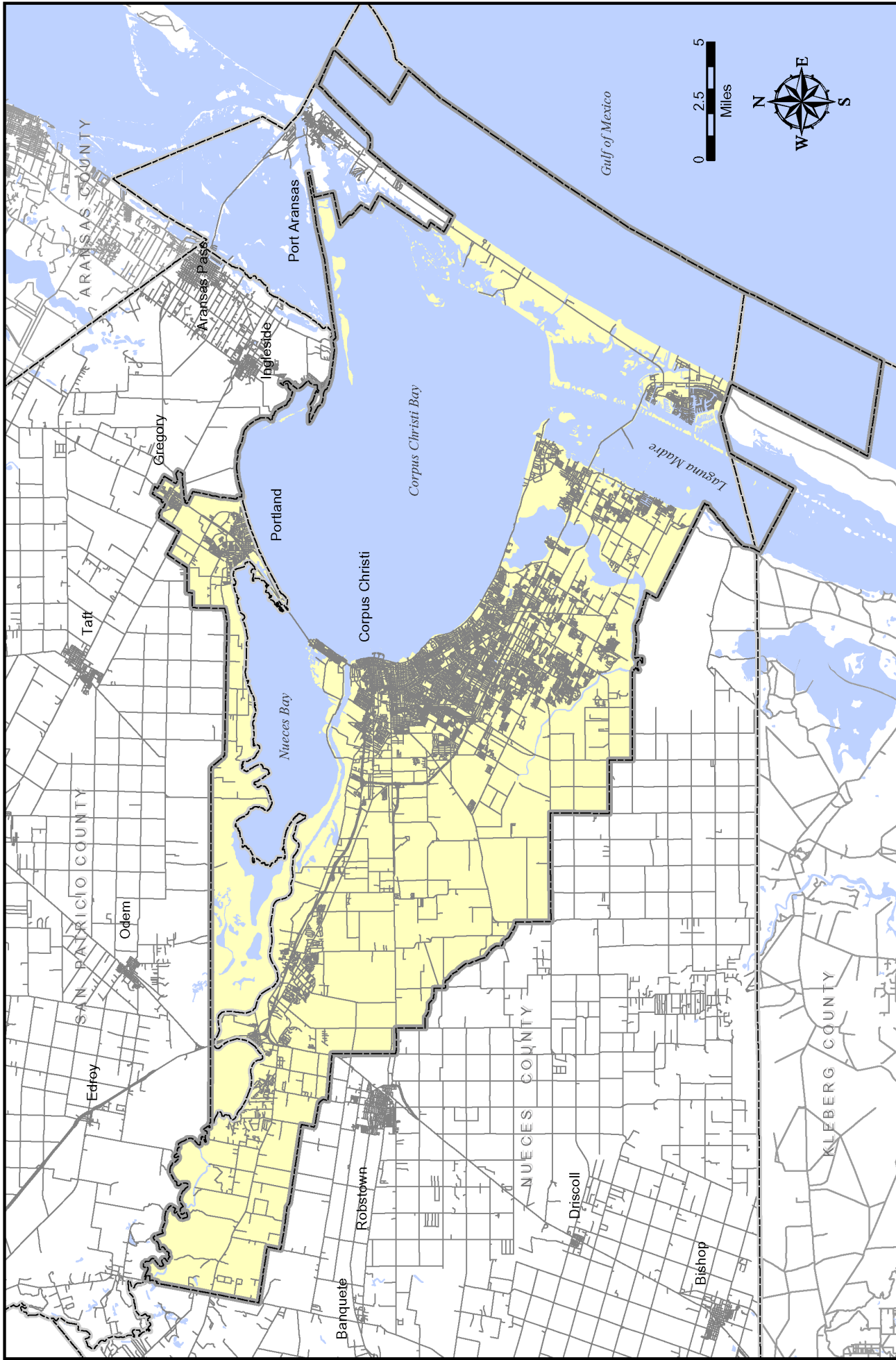
<b>VOTING MEMBERS</b>		
<b>Glen Sullivan, P.E.</b> Chairperson	Director of Public Works	Nueces County
<b>Fred Nardini</b> Vice-Chairperson	County Commissioner - Pct 2	San Patricio County
<b>Mike Tanner</b>	City Manager	City of Portland
<b>Pete Anaya, P.E.</b>	Director of Engineering Services	City of Corpus Christi
<b>Bill Green, P.E.</b>	Deputy Director of Engineering Services	Port of Corpus Christi Authority
<b>Jorge Cruz-Aedo</b>	Acting Interim Chief Executive	Corpus Christi Regional Transportation Authority
<b>Paula Sales-Evans, P.E.</b>	Director Transportation Planning & Development	Texas Department of Transportation Corpus Christi District

<b>EX-OFFICIO NON-VOTING MEMBERS</b>		
<b>Kirk Fauver</b>	Statewide Planning Engineer	Federal Highway Administration
<b>Tony Ogboli</b>	Community Planner	Federal Transit Administration
<b>Cary Karnstadt</b>	Transportation Planner	Transportation Planning & Programming, Texas Department of Transportation
<b>Richard Bullock</b>	Director of Planning & Development	Coastal Bend Council of Governments
<b>Albert Pardo, P.E.*</b>	City Engineer	City of Portland
<b>Charlie Cardenas, P.E.*</b>	City Traffic Engineer	City of Corpus Christi
<b>Fred Segundo</b>	Director of Aviation	City of Corpus Christi
<b>Stephen L. Nidma</b>	Public Transportation Coordinator	Texas Department of Transportation Corpus Christi District

\* Designated Alternate

**APPENDIX 'B'**

**METROPOLITAN AREA BOUNDARY MAP**



# CORPUS CHRISTI MPO BOUNDARY

Corpus Christi Metropolitan Planning Organization

The Metropolitan Planning Area comprises the City of Corpus Christi, City of Portland, City of Gregory and parts of Nueces, San Patricio and Kleberg Counties. Where ever a boundary line coincides with existing public right-of-way shall be included with said boundary. March 4, 2004.

**Legend**

MPO Boundary

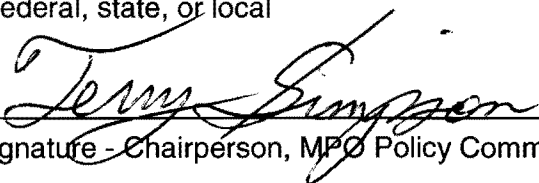


**APPENDIX 'C'**  
**DEBARMENT CERTIFICATION**

**DEBARMENT CERTIFICATION  
(Negotiated Contracts)**

- 1) The Corpus Christi MPO as **CONTRACTOR** certifies to the best of its knowledge and belief, that it and its principals:
- (a) Are not presently debarred, suspended, proposed for debarment, declared ineligible or voluntarily excluded from covered transactions by any federal department or agency;
  - (b) Have not within a three-year period preceding this proposal been convicted of or had a civil judgment rendered against them for commission of fraud or a criminal offense in connection with obtaining, attempting to obtain, or performing a public\* transaction or contract under a public transaction; violation of federal or state antitrust statutes or commission of embezzlement, theft, forgery, bribery, falsification or destruction of records, making false statements, or receiving stolen property;
  - (c) Are not presently indicated or otherwise criminally or civilly charged by a governmental entity\* with commission of any of the offenses enumerated in paragraph (1) (b) of this certification; and
  - (d) Have not within a three-year period preceding this application/proposal had one or more public transactions\* terminated for cause or default.
- 2) Where the **CONTRACTOR** is unable to certify to any of the statements in this certification, such **CONTRACTOR** shall attach an explanation to this certification.

\* federal, state, or local

  
\_\_\_\_\_  
Signature - Chairperson, MPO Policy Committee

San Patricio County - County Judge  
\_\_\_\_\_  
Title

\_\_\_\_\_  
Date *June 3, 2010*

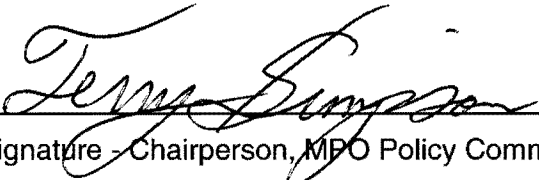
**APPENDIX 'D'**  
**LOBBYING CERTIFICATION**

**CERTIFICATION FOR CONTRACTS, GRANTS,  
LOANS AND COOPERATIVE AGREEMENTS**

The undersigned certifies to the best of his or her knowledge and belief, that:

- 1) No federal appropriated funds have been paid or will be paid by or on behalf of the undersigned, to any person for influencing or attempting to influence an officer or employee of any federal agency, a Member of Congress, an officer or employee of Congress, or an employee of a member of Congress in connection with the awarding of any federal contract, the making of any federal grant, the making of any federal loan, the entering into of any cooperative agreement, and the extension, continuation, renewal, amendment, or modification, of any federal contract, grant, loan, or cooperative agreement.
- 2) If any funds other than federal appropriated funds have been paid or will be paid to any person for influencing or attempting to influence an officer or employee of any agency, a Member of Congress, an officer or employee of Congress, or an employee of a Member of Congress in connection with this federal contract, grant, loan, or cooperative agreement, the undersigned shall complete and submit Standard Form - LLL, "Disclosure Form to Report Lobbying," in accordance with its instructions.
- 3) The undersigned shall require that the language of this certification be included in the award documents for all subawards at all tiers (including subcontracts, sub grants, and contracts under grants, loans, and cooperative agreements) and that all subrecipients shall certify and disclosure accordingly.

This certification is a material representation of fact upon which reliance was placed when this transaction was made or entered into. Submission of this certification is a prerequisite for making or entering into this transaction imposed by Section 1352, Title 31, U.S. Code. Any person who fails to file the required certification shall be subjected to a civil penalty of not less than \$10,000 and not more than \$100,000 for each such failure.

  
\_\_\_\_\_  
Signature - Chairperson, MPO Policy Committee

San Patricio County - County Judge  
\_\_\_\_\_  
Title

\_\_\_\_\_  
Date *June 3, 2010*

**APPENDIX 'E'**  
**CERTIFICATION OF COMPLIANCE**

**CERTIFICATION OF COMPLIANCE**

I, Terry A. Simpson, County Judge for San Patricio County, a duly authorized officer/representative of Corpus Christi Metropolitan Planning Organization do hereby certify that the contract and procurement procedures that are in effect and used by the forenamed MPO are in compliance with 49 CFR 18, "Uniform Administrative Requirements for Grants and Cooperative Agreements with State and Local Governments," as it may be revised or superseded.

June 3, 2010  
Date

Terry Simpson  
Signature - Chairperson, MPO Policy Committee

Attest:

A. Wilkins  
Name

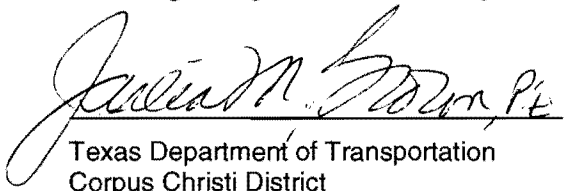
TRANSPORTATION PLANNING DIRECTOR  
Title

**APPENDIX 'F'**  
**MPO SELF- CERTIFICATION**

**MPO SELF-CERTIFICATION**

In accordance with Title 43, Part 1, Chapter 15, Subchapter A, Rule §15.5 of the Texas Administrative Code, the Texas Department of Transportation, and the Corpus Christi Metropolitan Planning Organization for the Corpus Christi urbanized area(s) hereby certify that the transportation planning process is addressing the major issues in the metropolitan planning area and is being conducted in accordance with all applicable requirements of:

- (1) 23 U.S.C. 134, 49 U.S.C. 5303, and this subpart;
- (2) In nonattainment and maintenance areas, sections 174 and 176 (c) and (d) of the Clean Air Act, as amended (42 U.S.C. 7504, 7506 (c) and (d)) and 40 CFR part 93;
- (3) Title VI of the Civil Rights Act of 1964, as amended (42 U.S.C. 2000d-1) and 49 CFR part 21;
- (4) 49 U.S.C. 5332, prohibiting discrimination on the basis of race, color, creed, national origin, sex, or age in employment or business opportunity;
- (5) Section 1101(b) of the SAFETEA-LU (Pub. L. 109-59) and 49 CFR part 26 regarding the involvement of disadvantaged business enterprises in USDOT funded projects;
- (6) 23 CFR part 230, regarding the implementation of an equal employment opportunity program on Federal and Federal-aid highway construction contracts;
- (7) The provisions of the Americans with Disabilities Act of 1990 (42 U.S.C. 12101 et seq.) and 49 CFR parts 27, 37, and 38;
- (8) The Older Americans Act, as amended (42 U.S.C. 6101), prohibiting discrimination on the basis of age in programs or activities receiving Federal financial assistance;
- (9) Section 324 of title 23 U.S.C. regarding the prohibition of discrimination based on gender; and
- (10) Section 504 of the Rehabilitation Act of 1973 (29 U.S.C. 794) and 49 CFR part 27 regarding discrimination against individuals with disabilities.

  
Texas Department of Transportation  
Corpus Christi District

Interim District Engineer

Title

Date 6/3/2010

  
Metropolitan Planning Organization  
Policy Board Chairperson

San Patricio County - County Judge

Title

Date June 3, 2010