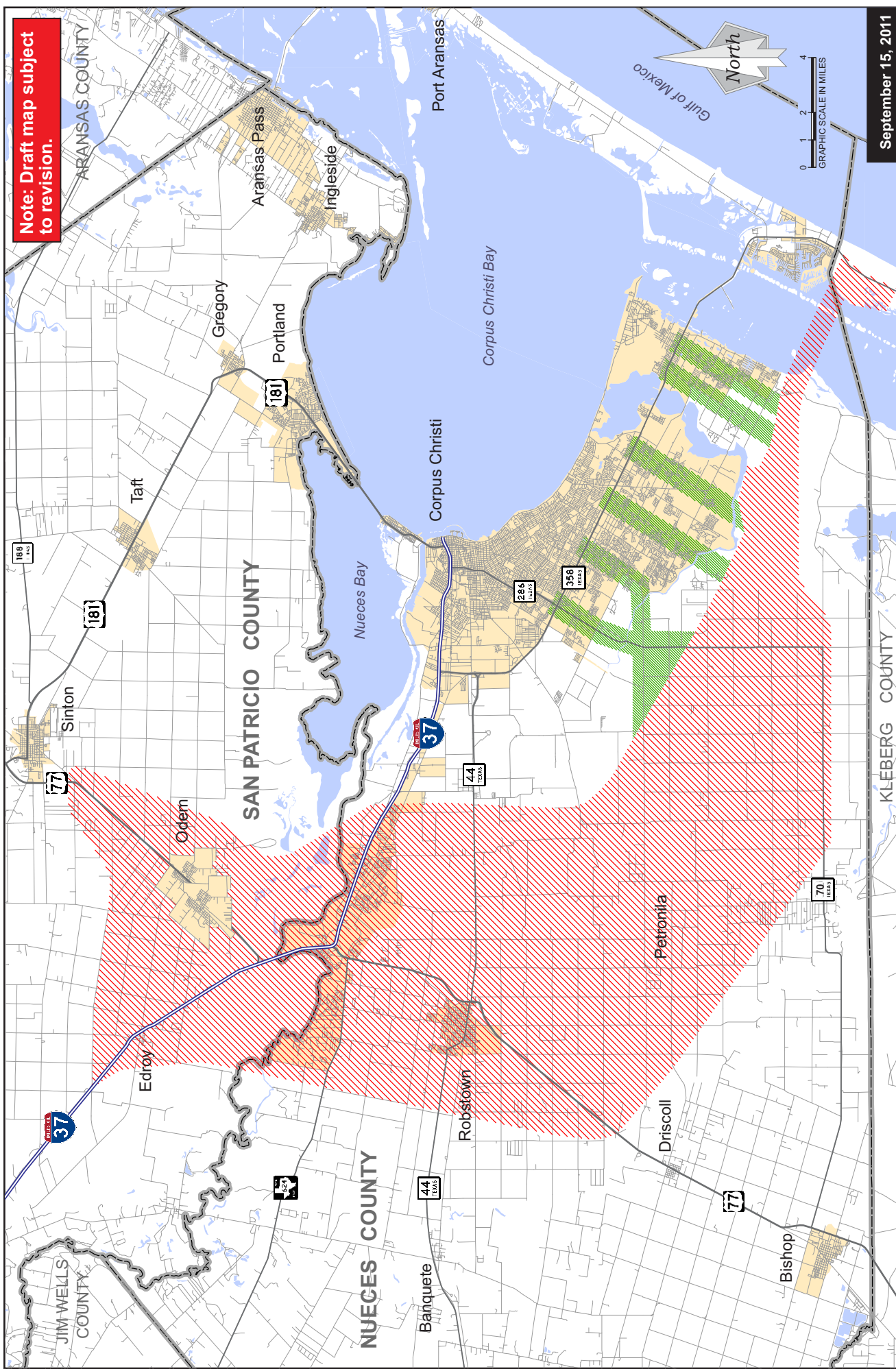


Note: Draft map subject to revision.






September 15, 2011

Regional Parkway

CONNECTIVITY FOR NUECES AND SAN PATRICIO COUNTIES
 Feasibility Study Sponsors: Corpus Christi Metropolitan Planning Organization • Texas Department of Transportation
 San Patricio County • Nueces County • City of Corpus Christi

LEGEND

-  Initial Project Study Area
-  Connectors to SH 358 (SPID) Facilities
-  2000 Urbanized Area Boundaries

CORPUS CHRISTI



Phone: (361) 884-0687
 Email: cmpo@cctxmpo.us

09/15/11