

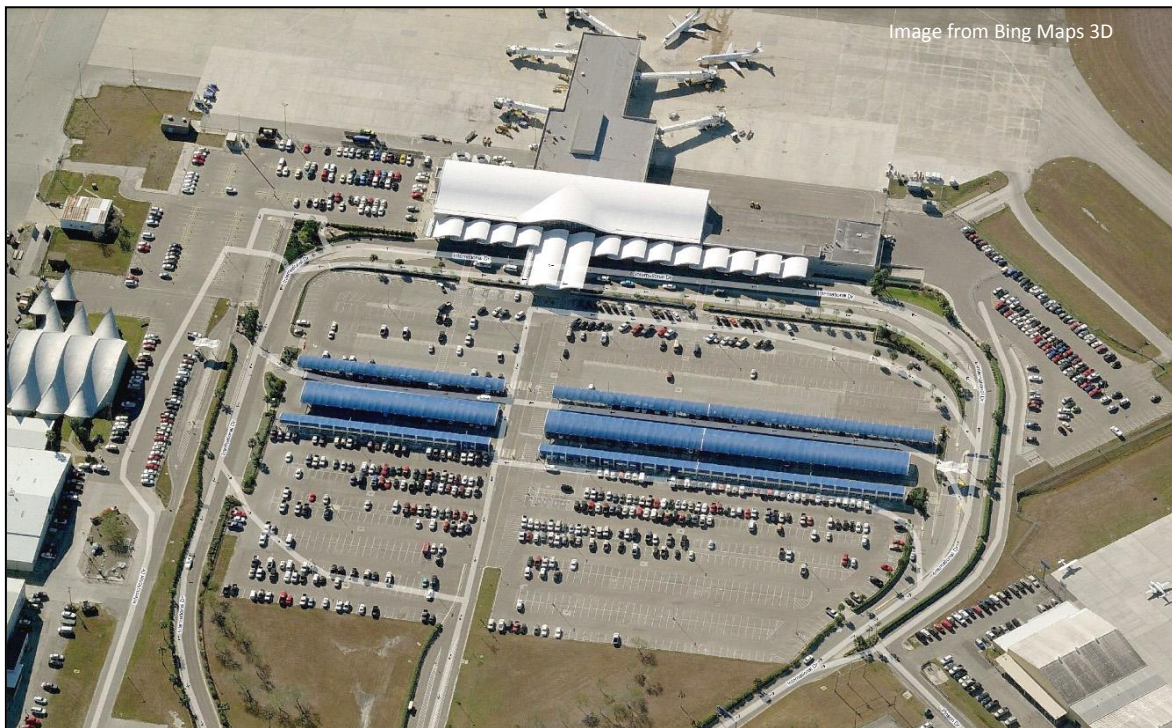
CHAPTER 9

CORPUS CHRISTI INTERNATIONAL AIRPORT

Introduction:

The Corpus Christi International Airport (CCIA) serves not only the Corpus Christi Metropolitan area, but also the outlying rural areas. American Eagle, Continental Express, and Southwest Airlines provide regularly scheduled service to Houston, Dallas/Ft. Worth, and Atlanta, GA. In 2007, more than 886,000 passengers were served at the airport. In 2002, the new terminal was placed in service and improvements were made to the aircraft parking aprons as well as parking facilities. In 2005, major improvements to the 7,508 foot long 13/31 runway were completed with extensive rehabilitation beginning on the 6,080 foot runway 17/35 in November, 2006. The Airport's master plan has been updated in February 2007 to meet the growing needs of the metropolitan area the Airport serves. Corpus Christi International Airport (CCIA) Public Safety hosts an annual Aircraft Rescue Fire Fighting Academy on Airport property each year. The two week course includes both classroom and hands on training. Firefighters and Public Safety Officers from around the area take part in "live burns" thanks to a Mobile Aircraft Fire Training Unit courtesy of Naval Air Station Corpus Christi.

Corpus Christi International Airport - Terminal and Parking facilities



Projects:

Current improvements include:

Rehabilitate West GA Apron, Phase II (Construction):

Rehabilitate West General Aviation Apron, which includes the design for the removal of approximately 51,000 square yards of damaged asphalt apron and replacing it with reinforced concrete. The \$7.4 million construction project began on August 31, 2007.

Improve Airport Drainage, Phase V (Construction):

Airfield Drainage improvements to the mid-field drainage areas began August 2007.

CCIA Airport Entrance and Business Park Signage:

This project includes the removal and replacement of the existing CCIA entrance sign and the installation of a new International Business Centre sign. This project was completed in 2008.

Rehabilitate Taxiway System - Phase I:

This project includes the design for the rehabilitation of the entire CCIA Taxiway system. Work milling and overlaying of approximately 43,000 square yards of damaged asphalt pavement; routing, crack sealing and pavement sealing of approximately 214,000 square yards of asphalt pavement; and striping. The construction of this project will enhance and increase the life of the existing Taxiway System. The design of this project was completed the end of January, 2008. The bidding and construction phase of this project are contingent on FAA direction and funding.

Rehabilitate Taxiway Lighting System – Phase I:

As identified in the 2006 Certification Inspection, by the FAA Certification Inspector, CCIA currently has a majority of its airfield guidance signs that are in need of replacement. This work will include replacing all fixtures, transformers, connector kits, duct bank, cabling, some concrete bases and associated signage. The installation of this new signage will greatly reduce the amount of energy CCIA currently uses to operate these signs and meet current FAA requirements. The design of this project was completed January, 2008.

Improve Airport Drainage Area VI – Phase I:

Airfield Drainage Phase VI will continue improvements to the Airfield drainage areas following the Airport Drainage Study. This work is coordinated with the Phase V Drainage Improvements by increasing storm water runoff capacity on the Airfield.

Most of CCIA's existing drainage system was designed to a 5-year storm event and has met its life expectancy. Additionally, some drainage system infrastructure is showing signs of deterioration. The Airport Drainage Study has identified corrective measures to these areas for improvements. Localized corrective measures have been completed in other phases of airfield drainage improvements. However,

additional work is required to continue to correct existing drainage problems and meet the 25-year storm water event requirement.

Drainage Improvements for this project include constructing an outfall channel from the southwest part of Runway 13-31 to Dunigan Creek. These improvements include: Increasing the storm water storage and culvert capacities to meet a 25-year storm water event; and constructing a culvert structure, complete with headwalls, to cross the Airport Perimeter Road and FM 763. The design of this project is scheduled to be completed by the end of January, 2008.

Airport Commercial Development:

The Corpus Christi Regional Economic Development Corporation works actively to promote available sites at the Corpus Christi International Airport for commercial development. Their efforts include working with Airport Administration to solve specific site location needs and expand the International Airport's cargo activities.

Airport property that is available for development is divided into four zones:

DEVELOPMENT ZONE 1 - Approximately eleven acres with frontage along State Highway 44. Close proximity to utilities. Corner lot at intersection of SH 44 and International Drive suitable for development of hotel or other commercial business. A portion of this property is located close to the runway and taxiway system making it ideal for aeronautical use.

DEVELOPMENT ZONES 2 & 3 - Approximately fifty acres with frontage along State Highway 44. Close proximity to utilities and quick access to main entrance road (International Drive) and SH 44. Zone 2 is appropriate for the development of business parks and light industrial manufacturing facilities. The western acreage has rapid access to the taxiway system and Runway 13. Manufacturers of just-in-time deliverables and high value technology products will benefit from close proximity of Zone 2 to the D.H.L. air and roadway terminal.

DEVELOPMENT ZONE 4 - Over 125 acres at midfield. A Parallel Runway 13-31 (10,000' x 150') is included in the airport's Master Plan which will accommodate large cargo aircraft. This property is suitable for the development of air and highway intermodal transportation facilities.

Long-Range Master Plan:

The 2007 Airport Master Plan Update proposed a capital improvement project of an estimated \$76.9 million over a 20-year period. The principal projects are the extension of the two runways and related airfield development. All the proposed projects are based upon projected long-term continued growth in aviation activity. Most of the projects would be eligible for Federal Aviation Agency funding and assume 95% federal participation. Non-airline revenue, external grants control of operating expenses and increased airline rates and charges would be the source of local funding.

[page intentionally left blank]