

**REGIONAL PARKWAY  
SEGMENT A & B  
TYPICAL ROADWAY SECTION**  
NOT TO SCALE

NOT A BIDDING DOCUMENT  
 SAMUEL SALDIVAR JR. 92638  
 TITLE P.E. REGISTERED  
 HDR ENGINEERING, INC.  
 REGISTRATION NUMBER: 07154  
 11/28/2016  
 DATE

**PRELIMINARY**  
 THIS PROJECT IS PRELIMINARY AND INFORMATION ONLY. IT IS NOT TO BE USED FOR CONSTRUCTION OR FOR ANY OTHER PURPOSES WITHOUT THE WRITTEN CONSENT OF HDR ENGINEERING, INC.

**REGIONAL PARKWAY  
SEGMENT A & B  
ALIGNMENT ALTERNATIVE  
CSJ: 0916-00-066  
LIMITS:  
FROM SH 286 TO PARK ROAD 22  
SEGMENT A LENGTH: 8.9 MI  
SEGMENT B LENGTH: 4.8 MI**

**LEGEND**

REGIONAL PARKWAY PROPOSED RIGHT OF WAY -----

ALIGNMENT CENTERLINE -----

UTILITY (OVERHEAD POWER) - - - - -

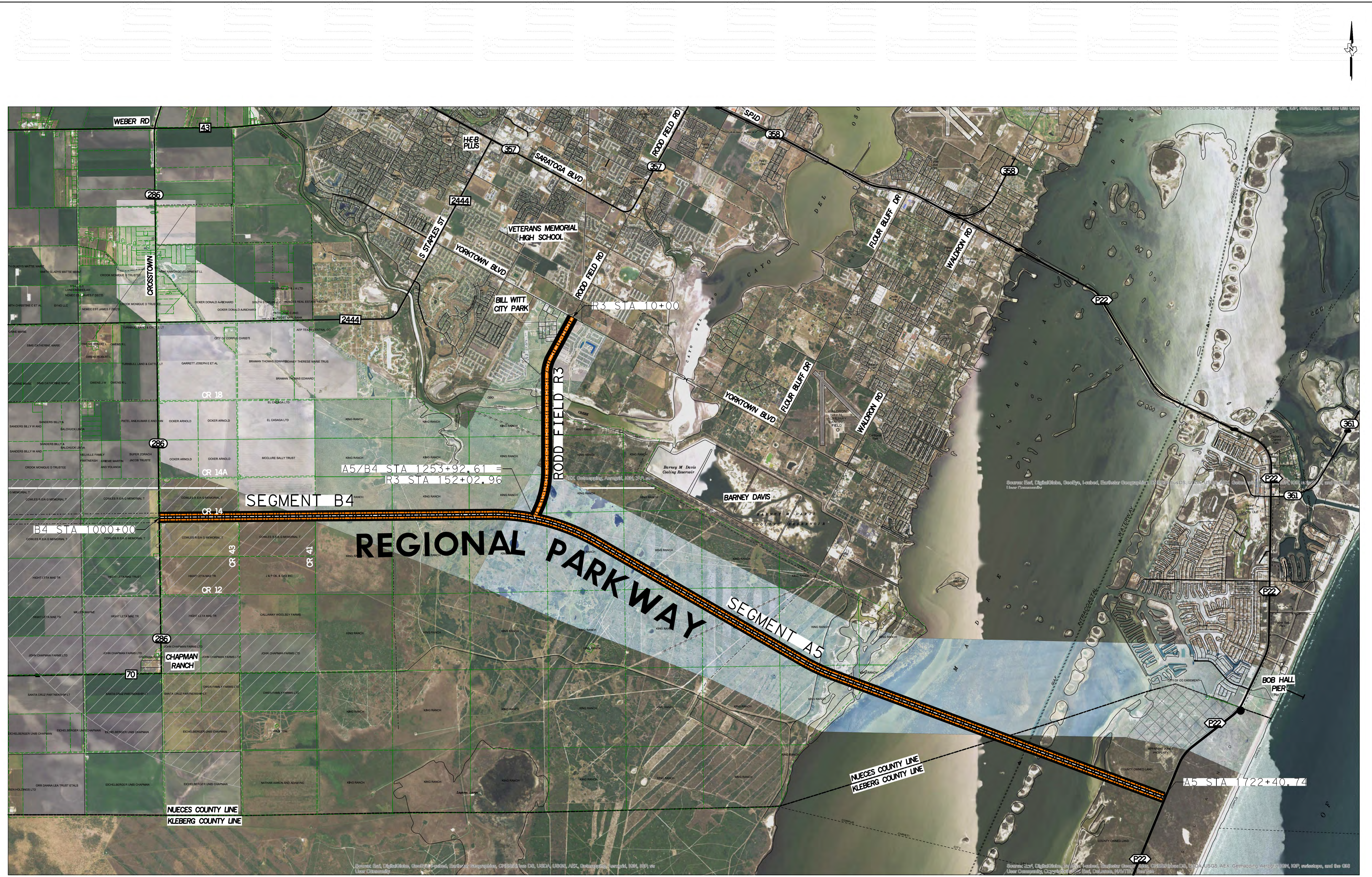
10/2014 ANNEXATION / / / / /

SCALE IN FEET  
 0 500 1000



**HDR** HDR Engineering Inc.  
Texas P.E. Firm Registration No. F-754  
DRAWING PREPARED BY: HDR ENGINEERING, INC.

FED. PROJ. NO.	FEDERAL AID PROJECT NO.	SHEET NO.
0916-00-066	0916-00-066	APPENDIX R
DRN. S. SALDIVAR	STATE	DIST.
DRN. H. LEANEY	TEXAS	CRP
DRN. U. PEREZ	CONT.	SECT.
DRN. R. PEÑAZA	0916	00
		066
		REGIONAL PARKWAY



Source: Esri, DigitalGlobe, GeoEye, Earthstar (Earthstar), CNES/Airbus DS, USDA, USGS, AeroGRID, IGN, SIA, Mapbox, Bing, Swire, and the NOAA National Center for Earth and Space Information